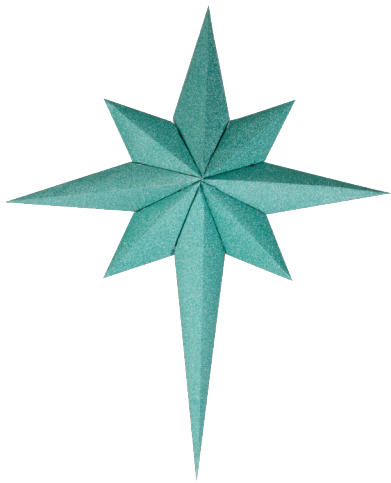


CRICUT  
CRAFT ROOM™  
EXCLUSIVES



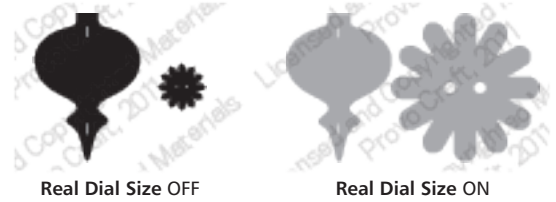
Images for the Cricut  
Craft Room™ design tool

# 3D Ornaments



## What is **Real Dial Size**?

All characters are measured from the lowest possible point to the highest. In 3D Ornaments, the non-shift base characters are all the same height, and the shift characters and **Layer** features are designed to fit them proportionately. If **Real Dial Size** is selected, all characters will be cut according to the size specified.

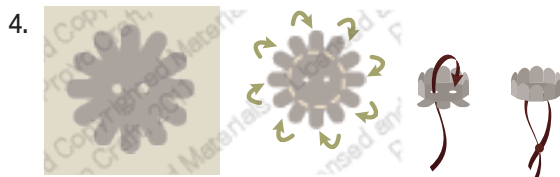


■ No Shift    ■ Shift

Base	Layer 1	Layer 2	Finished Image	
 <Ornamt1>	+  <Ornmt1-s>	+ 	+  +  +  +  +  +  +  + 	= 
 <Ornamt2>	+  <Ornmt2-s>	+ 	+  +  +  +  +  +  +  + 	= 
 <Star1>	+  <Star1-s>	+ 	+  + 	= 
 <Star2>	+  <Star2-s>	+ 	+  + 	= 
 <Ball1>	+  <Ball1-s>	+ 	+  +  + 	= 
 <Ball2>	+  <Ball2-s>	+ 	+  +  + 	= 

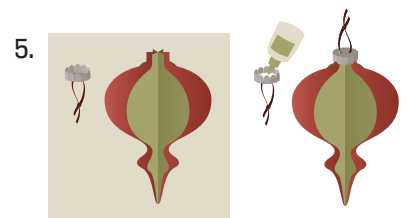
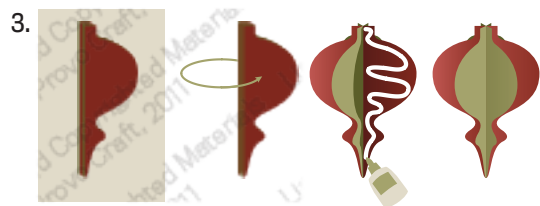
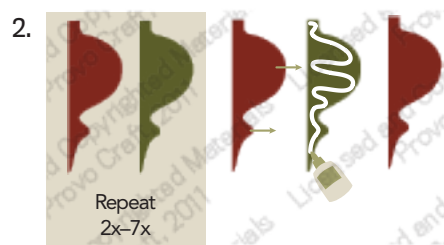
## Honeycomb Ornament

■ Right Side   ■ Wrong Side



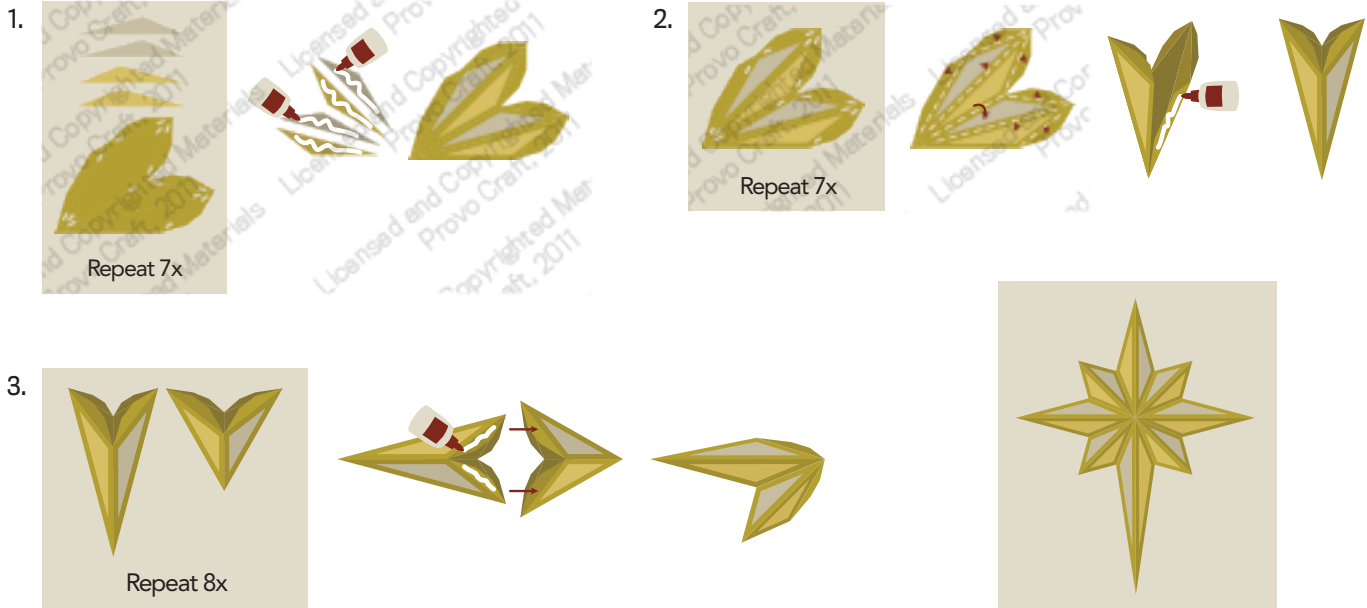
## Simplified Ornament

■ Right Side   ■ Right Side   ■ Wrong Side   ■ Wrong Side



## Christmas Star Ornament

■ Right Side ■ Right Side ■ Right Side ■ Wrong Side ■ Wrong Side ■ Wrong Side



## Ball Ornament

■ Right Side ■ Right Side ■ Wrong Side ■ Wrong Side

