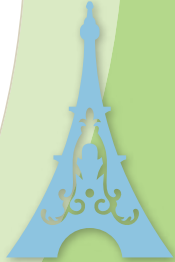
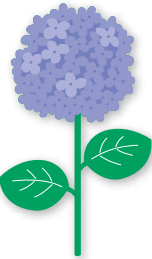
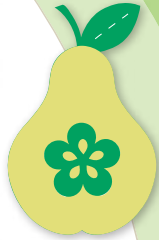


# Sampler Cartridge • Cartouche Échantillon



INCLUDES IMAGES FROM A VARIETY OF CARTRIDGES  
ELLE CONTIENT DES IMAGES D'UNE VARIÉTÉ DE CARTOUCHES

Use with all Cricut® machines  
Pour être utilisé avec toutes les machines Cricut®



Summer Bliss  
Seasonal



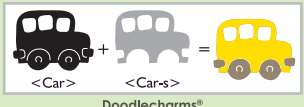
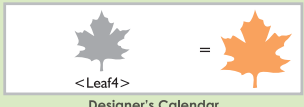
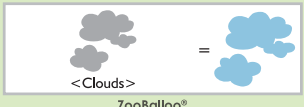
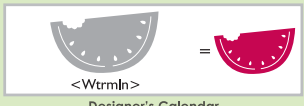
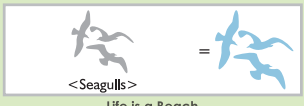
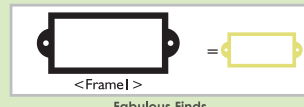
For complete instructions see your Cricut® user manual.  
Pour des instructions complètes veuillez vous référer au Manuel de l'Utilisateur Cricut®.  
Para instrucciones detalladas refiérase a su Manual del Usuario Cricut®.  
Finden Sie vollständige Anweisungen in Ihrem Cricut® Benutzerhandbuch.

No Shift/Sans la touche Shift (Touche de Majuscule)  
 With Shift/Avec la touche Shift (Touche de Majuscule)

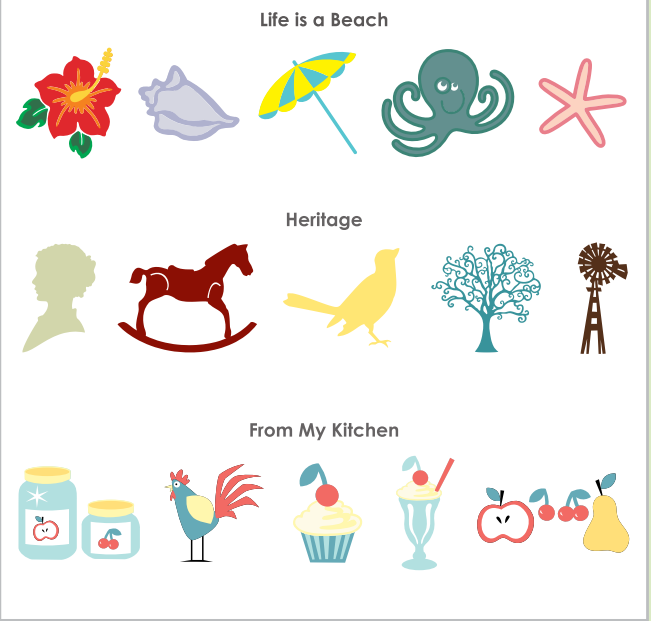
 +  =  <Tree1> + <Tree1-s> Serenade	 +  =  <Apple> + <Apple-s> Preserves	 =  <Seashell> Life is a Beach	 =  <Dolphin> Life is a Beach
 +  =  <Tree2> + <Tree2-s> Pagoda	 +  +  <Doll> + <Doll-s> Forever Young	 =  <Sunglass> Forever Young	 +  =  <Apron> + <Apron-s> From My Kitchen
 +  =  <Bamboo> + <Bamboo-s> Pagoda	 +  +  <Overalls> + <Shirt> Animal Kingdom®	 =  <Leaf1> Stretch your Imagination	 +  =  <Flower4> + <Flower5-s> Walk in My Garden®
 +  =  <Flower1> + <Flower1-s> Walk in My Garden®	 +  =  <Gown> + <GradCap> Everyday Paper Dolls	 =  <Leaf3> Stretch your Imagination	 =  <Bridge1> My World®
 =  <Cabin> My Community®	 +  =  <Accent1> + <Accent1-s> Serenade	 =  <Leaf3> Stretch your Imagination	 =  <Bridge2> My World®
 =  <Tree3> My Community®	 +  =  <Peacock> + <Peacock-s> French Manor	 +  =  <Pear> + <Pear-s> Preserves	 =  <Tractor> My World®
 =  <Sun> Doodlecharms®	 +  =  <Flower2> + <Flower2-s> Tie the Knot	 =  <Accent2> French Manor	 =  <Barn> My World®
 =  <Star> Doodlecharms®	 +  =  <Flower3> + <Flower3-s> Walk in My Garden®	 =  <Accent5> French Manor	 +  =  <Bucket> + <Bucket-s> Doodlecharms®
 +  =  <IceCream> + <IceCream-s> Sweet Treats	 +  =  <SaltPepper> + <SaltPepper-s> From My Kitchen	 +  =  <Flamingo> + <Flamingo-s> Serenade	 +  =  <Accent3> + <Accent3-s> French Manor
 +  =  <Flower3> + <Flower3-s> Walk in My Garden®	 +  =  <Crabs> + <Crabs-s> From My Kitchen	 +  =  <Palm Tree> + <Palm Tree-s> Doodlecharms®	 +  =  <SeaHorse> + <SeaHorse-s> Doodlecharms®
 =  <Leaf2> Life is a Beach	 =  <Leaf2> Life is a Beach	 =  <Leaf2> Life is a Beach	 =  <Leaf2> Life is a Beach



Cricut® 1" (2.54 cm) → 5.5" (13.97 cm)  
 Cricut Create® .25" (.64 cm) → 11.5" (29.21 cm)  
 Cricut Expression® .25" (.64 cm) → 23.5" (59.69 cm)



Purchase the full cartridges to get these images and more like them:  
 Achetez les cartouches complètes pour obtenir ces images et beaucoup d'autres images similaires:



The Cricut® name, marks, icon, and logotype are all trademarks of Provo Craft and Novelty, Inc. U.S. & foreign patents & patents pending.

2000430 Cricut Cartridge  
 Summer Bliss Seasonal

©2010 Provo Craft and Novelty, Inc. All rights reserved/Tous droits réservés  
 South Jordan, UT 84095  
 Made in China/Fabriqué en Chine  
 www.provocraft.com • 03/10-8682

Le Cricut® name, les marques, l'icône, et le logotype sont toutes les marques déposées du métier de Provo Craft and Novelty, Inc. Les Etats Unis et les brevets étrangers et brevets en instance.

