

## 7. Inserting images from the Cricut® Image Library

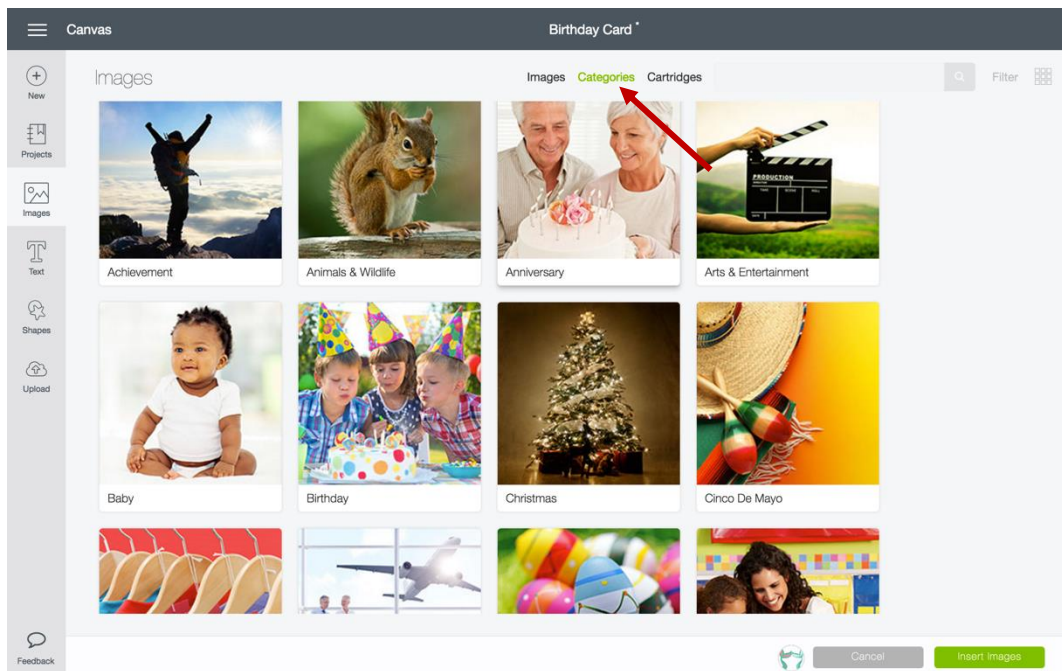
### E. Browsing images by category

If you don't have a specific image in mind, you can browse through categories to get ideas from the Image Library.

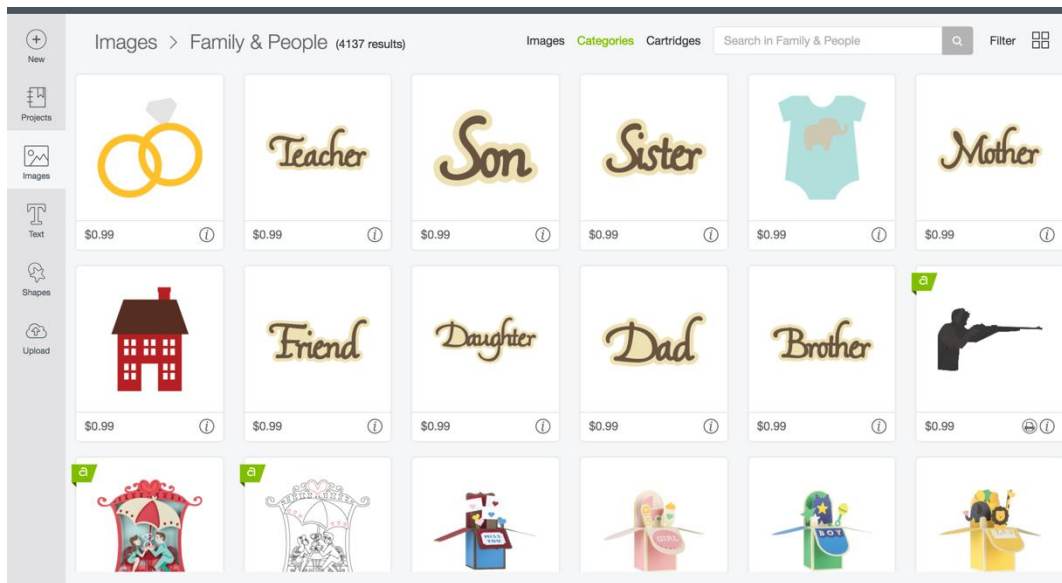
**Step 1** Begin by clicking the Images Tab in the Design Panel on left of the Canvas to access the Image Library.

**Step 2** A window opens so you can view the Image Library.

**Step 3** To access the image categories, select the Categories Tab on the top of the window. The screen changes to show a list of more than 50 image categories. Select an image category by clicking on the tile.



**Step 4** The screen changes to show all images that have been tagged with this category. Click on an Image Tile to add it to your Image Tray, or search for another image.



*Tip: The selected category name will be represented in the top left of the Insert Images screen. Click Images in the category hierarchy to return to the full list of categories again.*

**Step 5** To insert images into your project, select the ones you need and click the Insert Images button to add them to the Canvas. (See Section 7C for example.)

**Step 6** You can now move and size images to visualize how they'll look on your project. (See Section 7C for example.)