

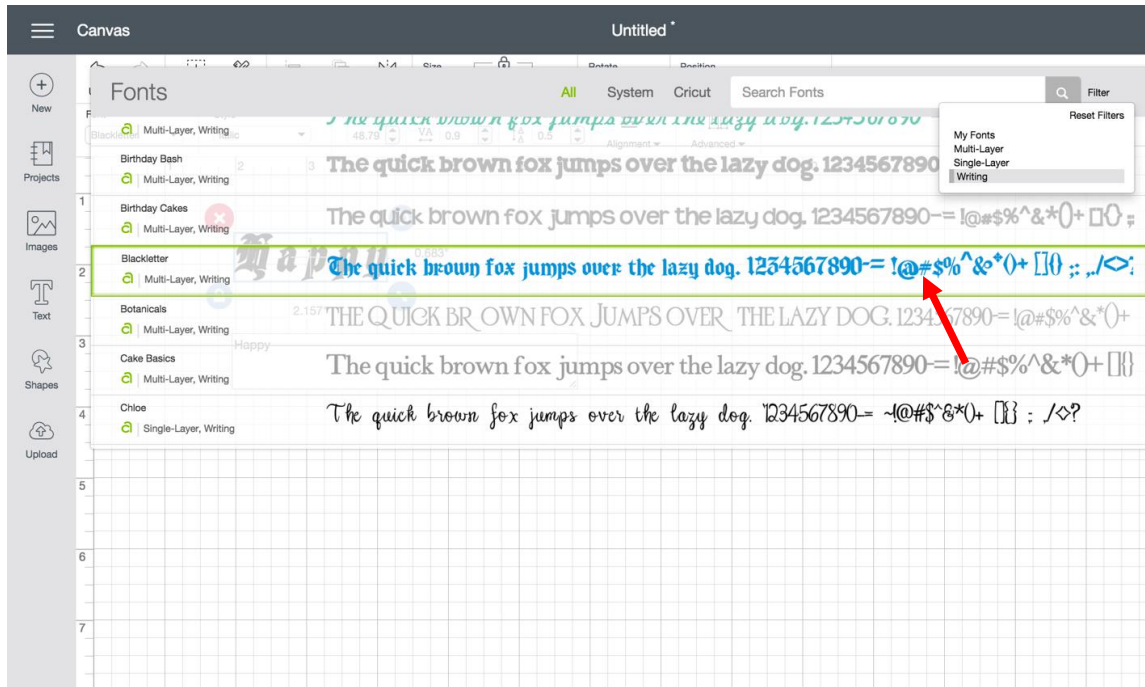
10. Working with text

K. Writing on your project

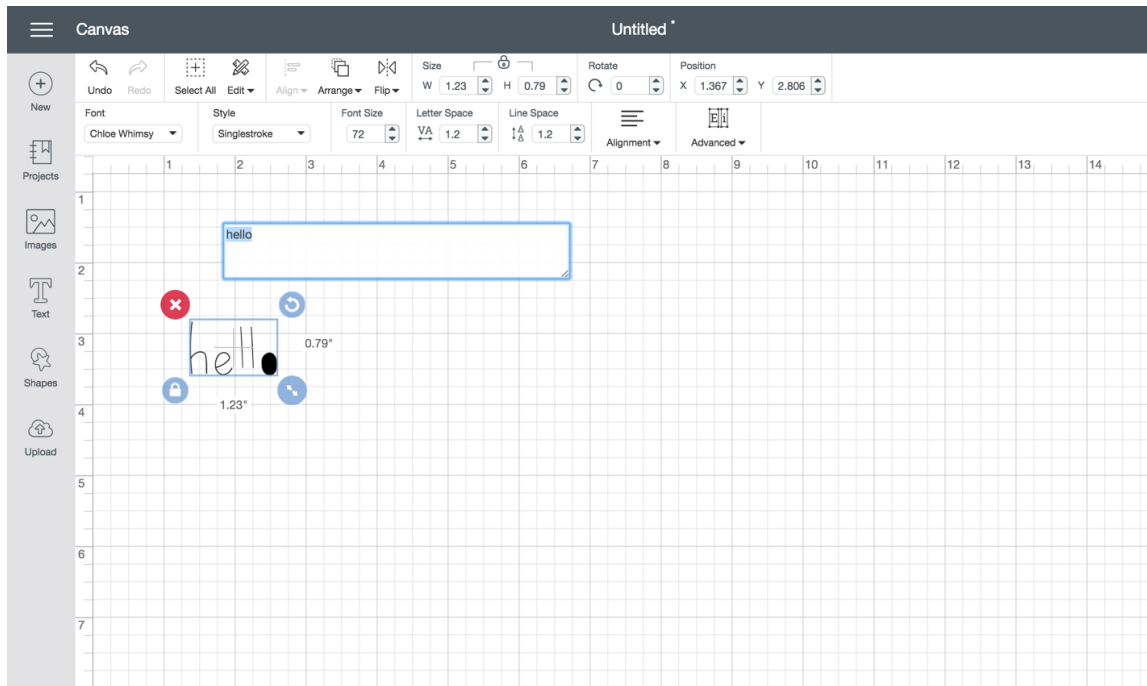
Cricut Design Space™ offers Cricut® fonts specifically designed to be drawn with a pen and not cut. While most fonts will trace the outside of the letters, writing style fonts feature letters with single strokes, so they're similar to handwritten text.

Changing your font to a writing style

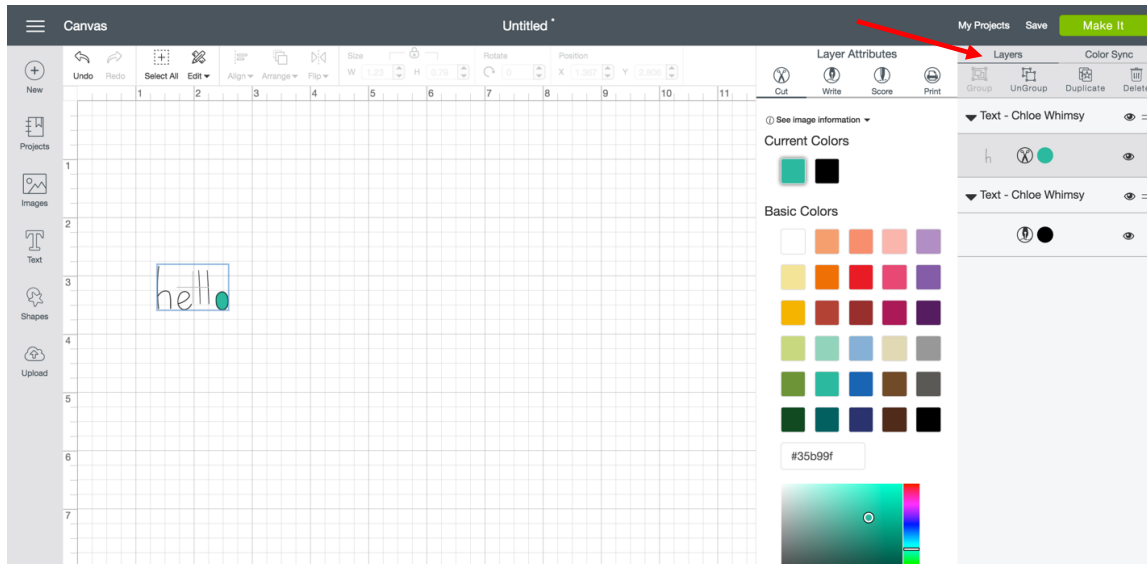
Step 1 Select any text on your Canvas. To change that text to a font specifically designed for writing, open the Font Menu in the Edit Bar. Click on the *Filter* link to the right of the search bar, and select Writing from the drop-down menu. The Font Menu will show fonts specifically designed for writing.



Step 2 Scroll through the options in the font drop-down menu, or enter a name in the search field and then click on your font of choice. The new font will be displayed.

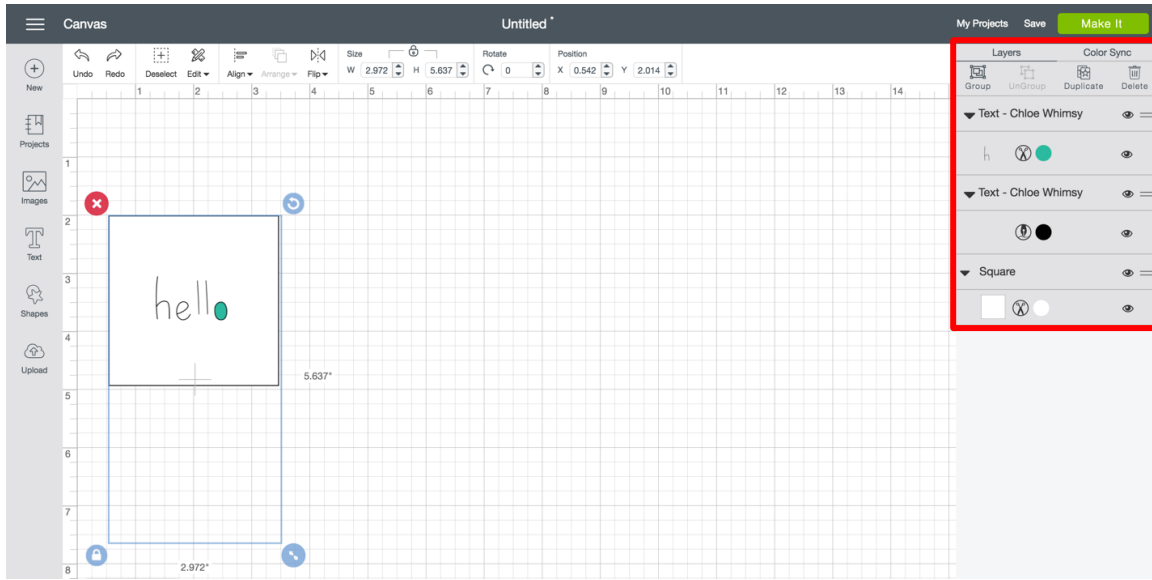


Step 3 Click on the Layers Tab to open the Layers Panel. Select the image layer to display the submenu. Make adjustments to the pen color.

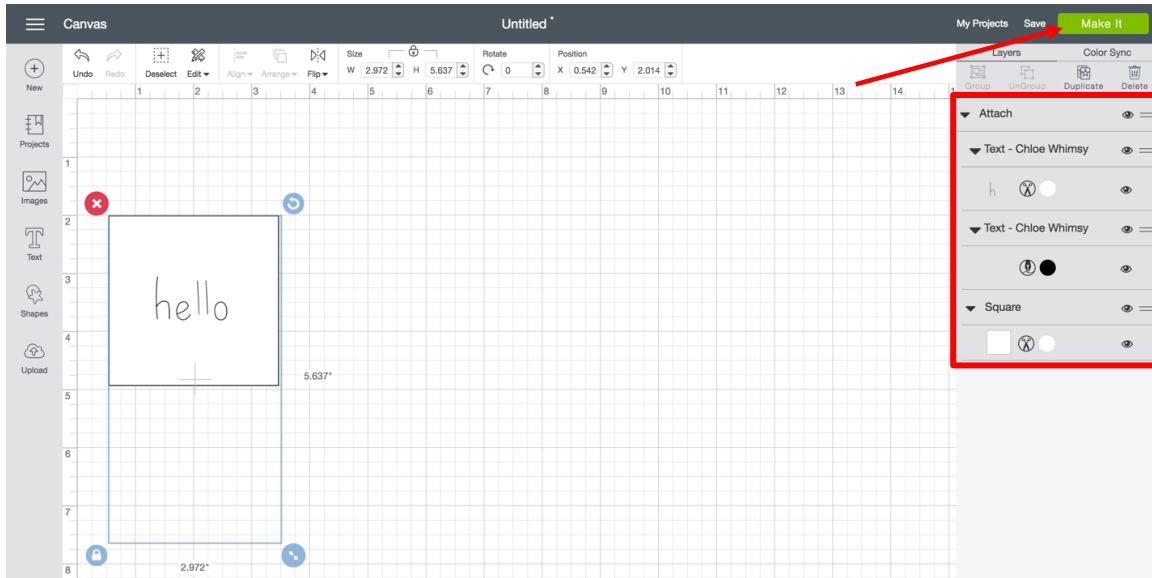


Tip: You will notice the Line Type is set to write and the color options have changed to match the colors of available Cricut pens.

Step 4 You need to indicate which layer the text should be written on. To do this, you need to use the Attach feature. Select both the text to be written and the image or layer you would like it to write on.

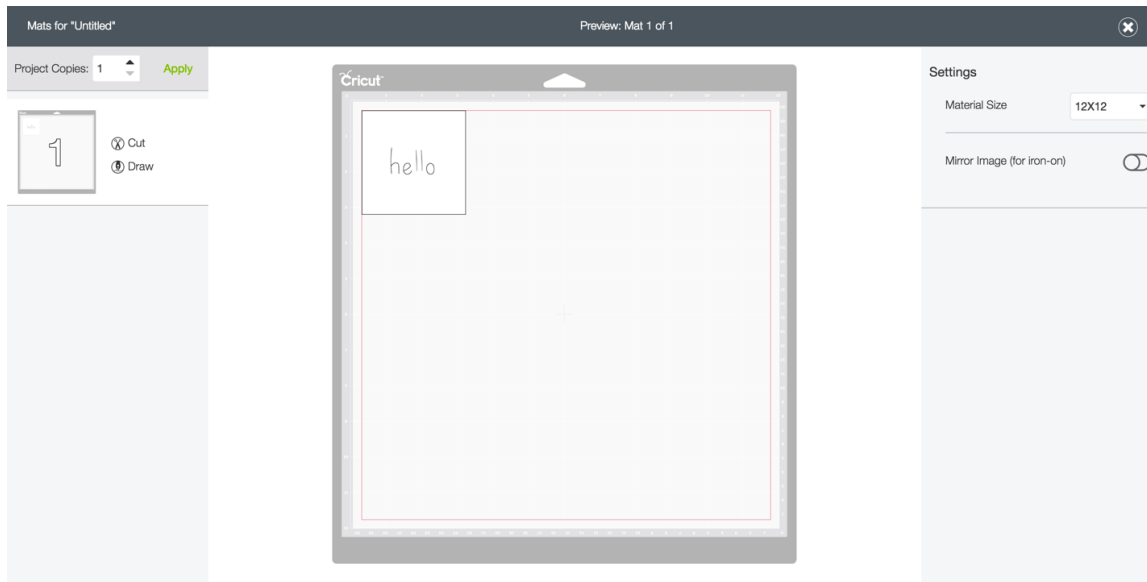


Step 5 Once your images have been selected, click *Attach* on the Layers Panel. Your text will be converted to an image and written on the layer it's attached to. Click *Make It* to continue to the Mat Preview screen.

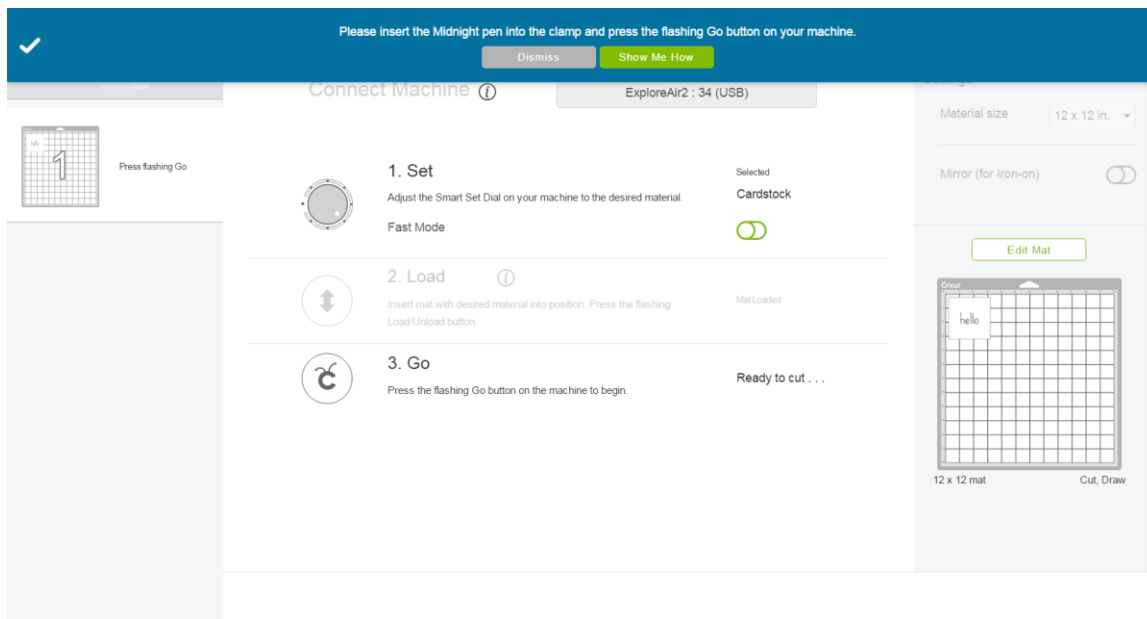


Step 6

The images will appear on the Mat Preview screen exactly as you have them arranged on your project.



Step 6 During the cutting process, you will be prompted to insert your pen.



Tip: If items are not attached, Cricut Design Space will cut in Paper Saver Mode, meaning it will automatically place objects on the cutting mat as close together as possible to conserve material, and written text will be placed on its own cutting mat.