

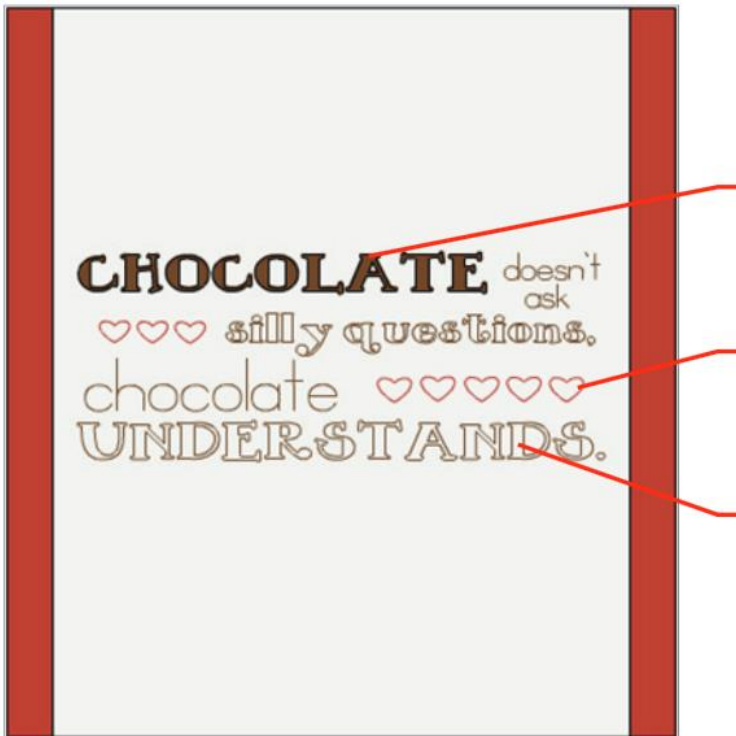
12. Layers Panel

I. Attach different line types

The Attach feature can be used to fasten a write or score line to a cut layer. If there is more than one layer in a project, any write or score lines must be attached to another layer so that they will be written or scored on in a precise location.

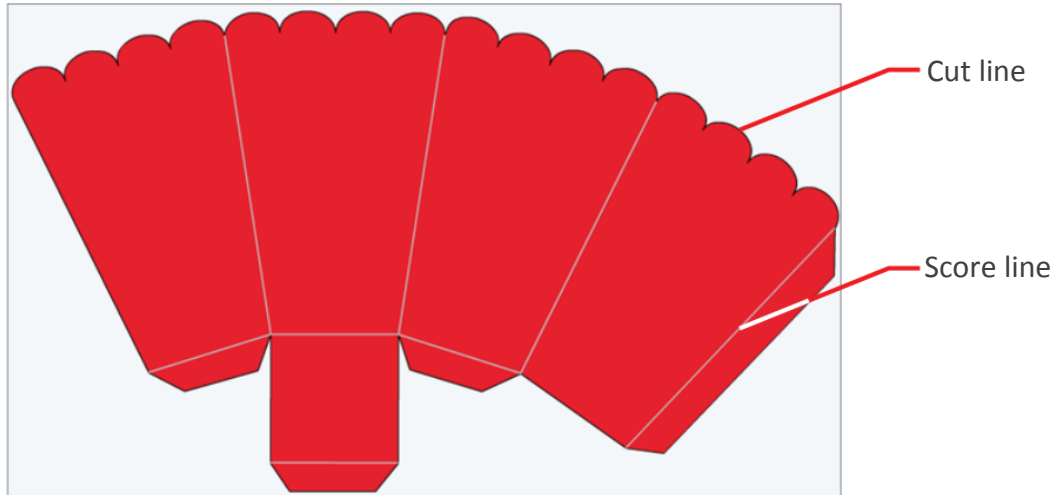
Cricut® machines can write or draw on different materials. The candy wrapper in example 1 has text that is cut out, images that are drawn, and text that is written. Anything that is drawn or written needs to be attached to another layer.

Example 1



Cricut® machines can also add score lines to projects. The box in example 2

contains score lines. Any project that contains a score line must have the score line attached to another layer.

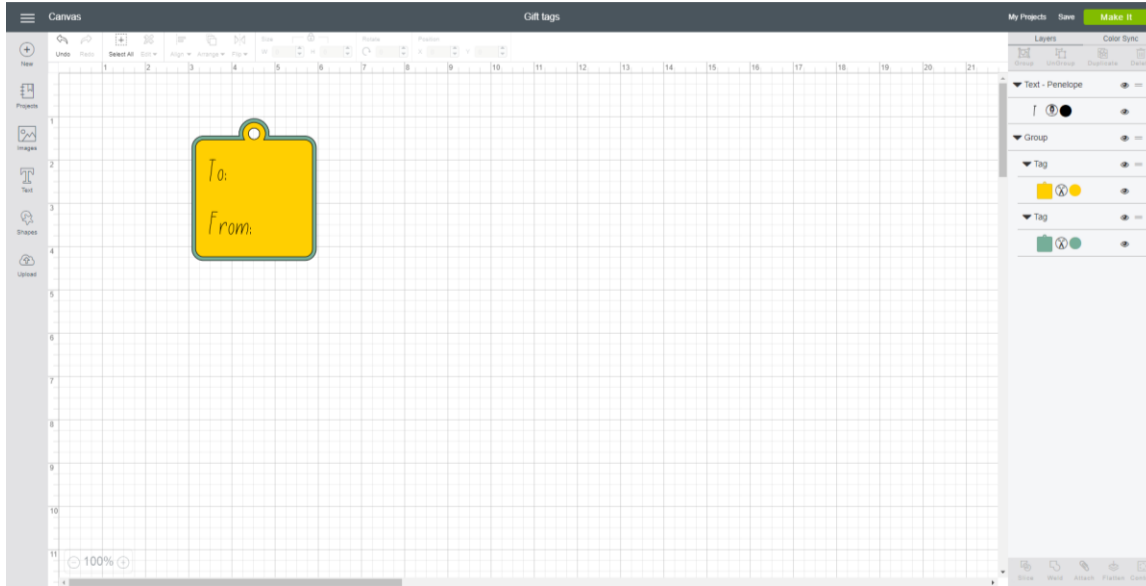
Example 2

If items are not attached, Design Space will cut in paper saver mode, meaning it will automatically place objects on their own cutting mat to conserve material. In addition to fastening write or score lines to cut layers, attaching also holds your cuts in position so that images on the Mat are positioned exactly as they show up on the Canvas.

Follow these steps to use Attach to fasten a write or score line to a cut layer.

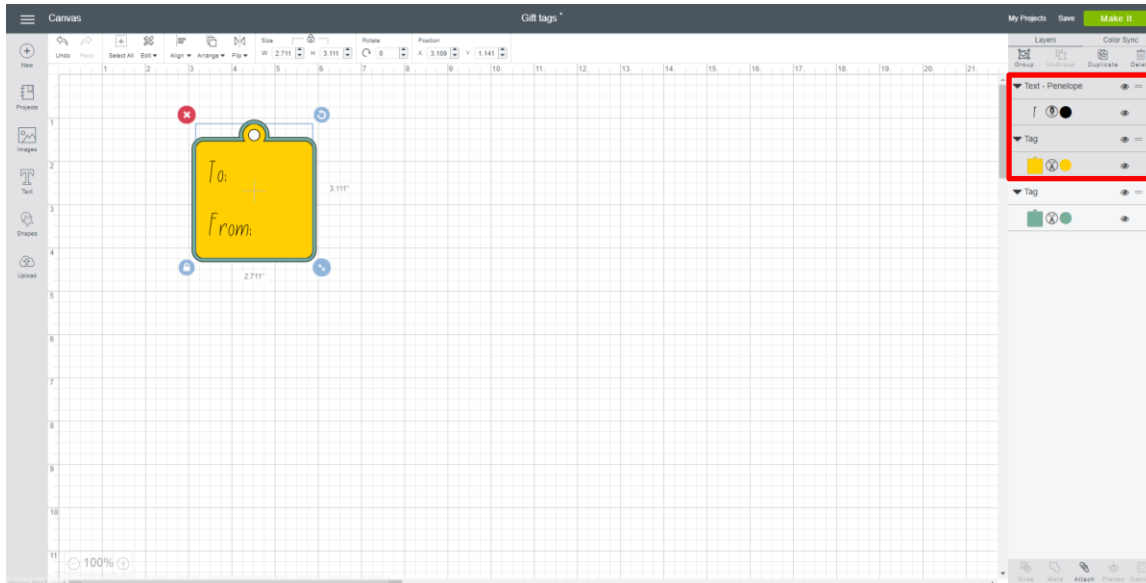
Attach a write or score line to a cut layer

Step 1 Design your image.

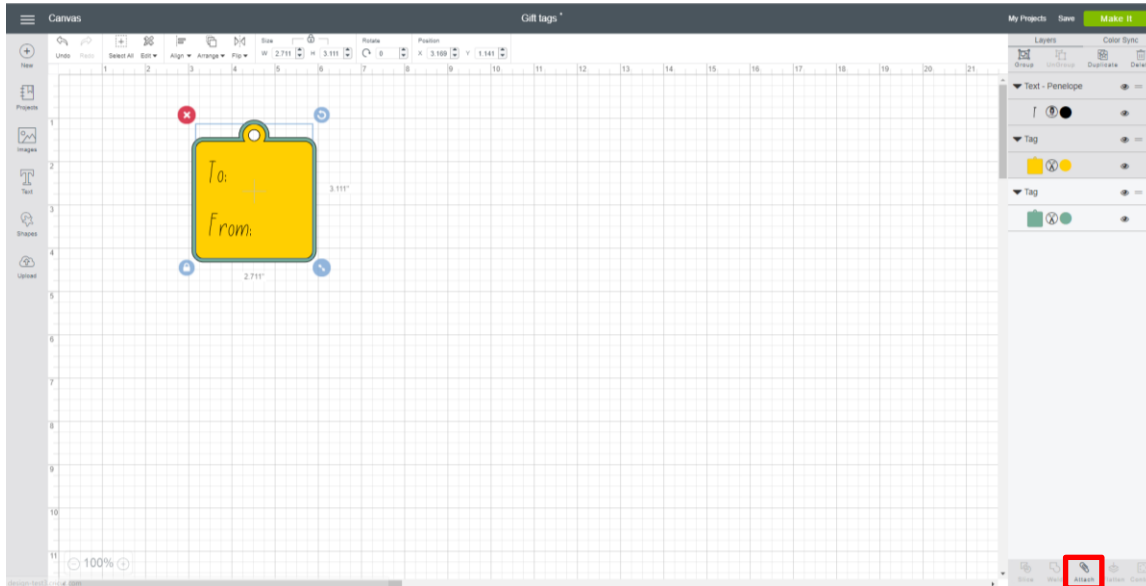


Tip To Attach a write or score line to a multilayer image, Ungroup the multilayer image first to avoid attaching all the layers together.

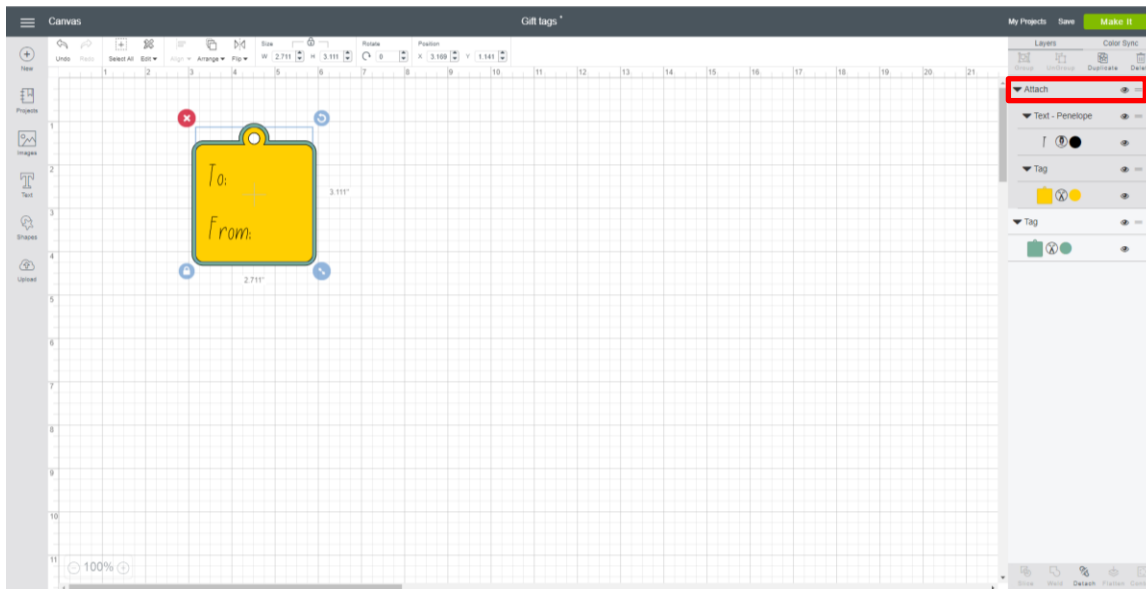
Step 2 Select the draw, write, or score line and the layer you are scoring or writing on.



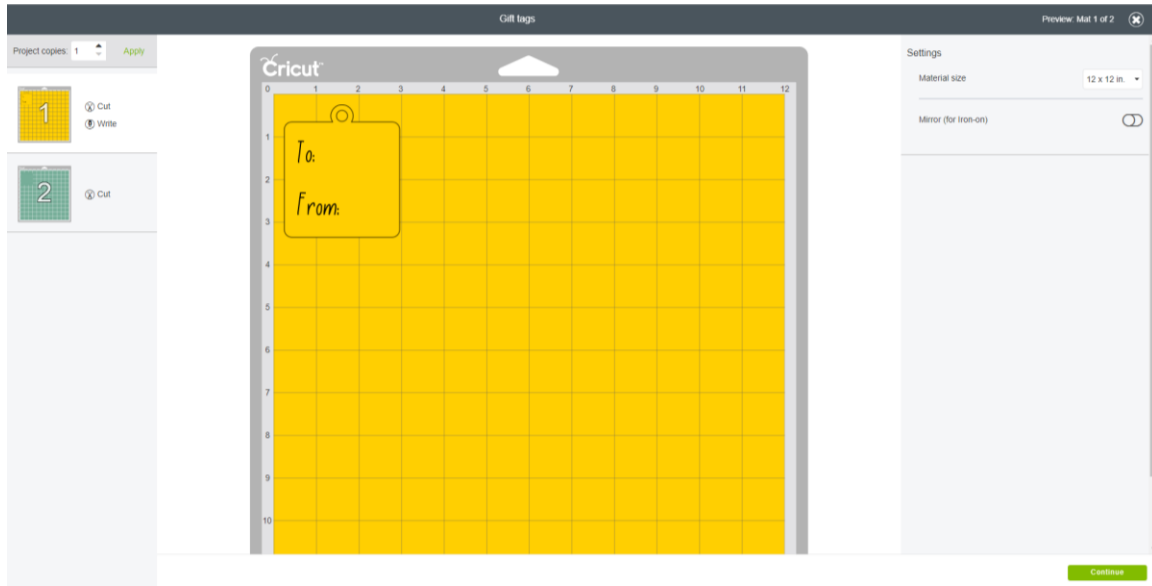
Step 3 Once you have selected your images, click *Attach* on the bottom of the Layers Panel. Your text will be converted to an image, and the text or your score line will be placed on the layer it has been attached to.



Step 4 Your attached images will be labeled as *Attached* in the Layers Panel. Click *Make It* to begin cutting.



Step 5 The images will appear on the mat as they were arranged on the Canvas.



Tip When cutting, you will be prompted to insert your Cricut Pen or Scoring Stylus when necessary.