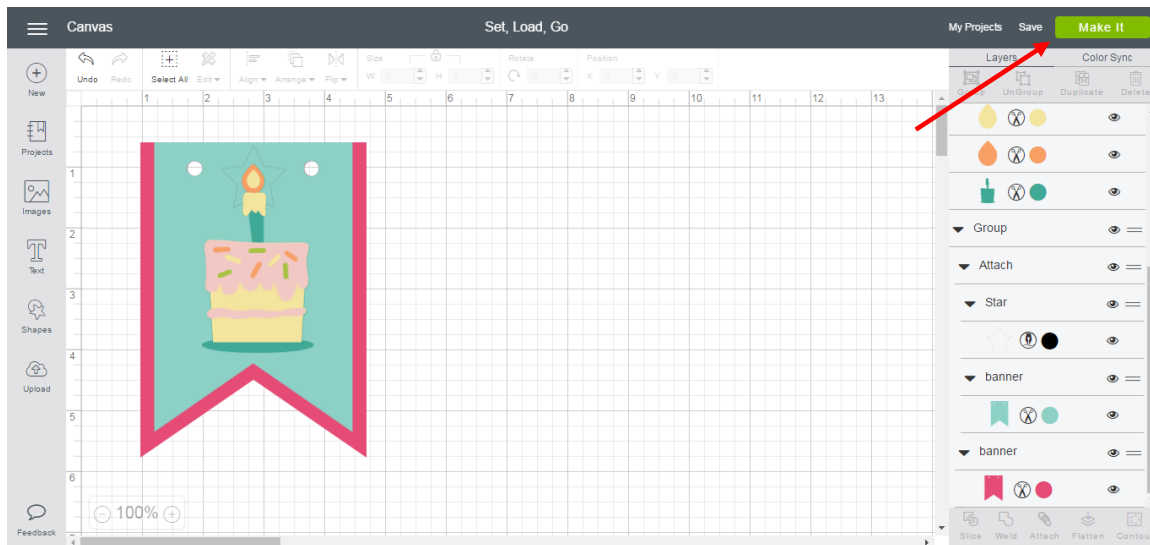


17. Cutting projects

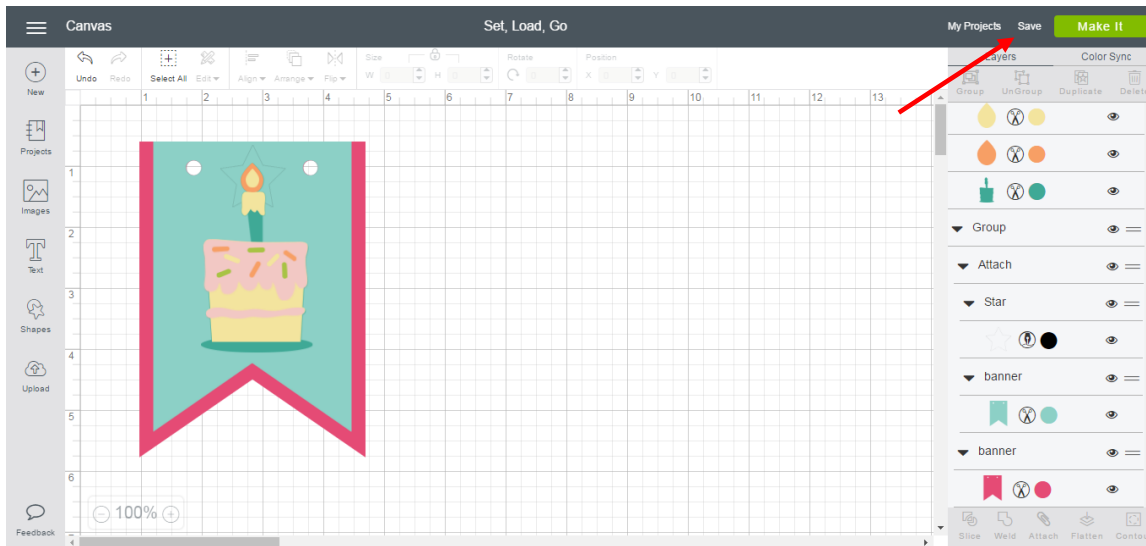
A. Set, Load, Go

Selecting the material on the Smart Set® dial, loading the mat into the machine, and telling your machine to cut are your final steps for making a project.

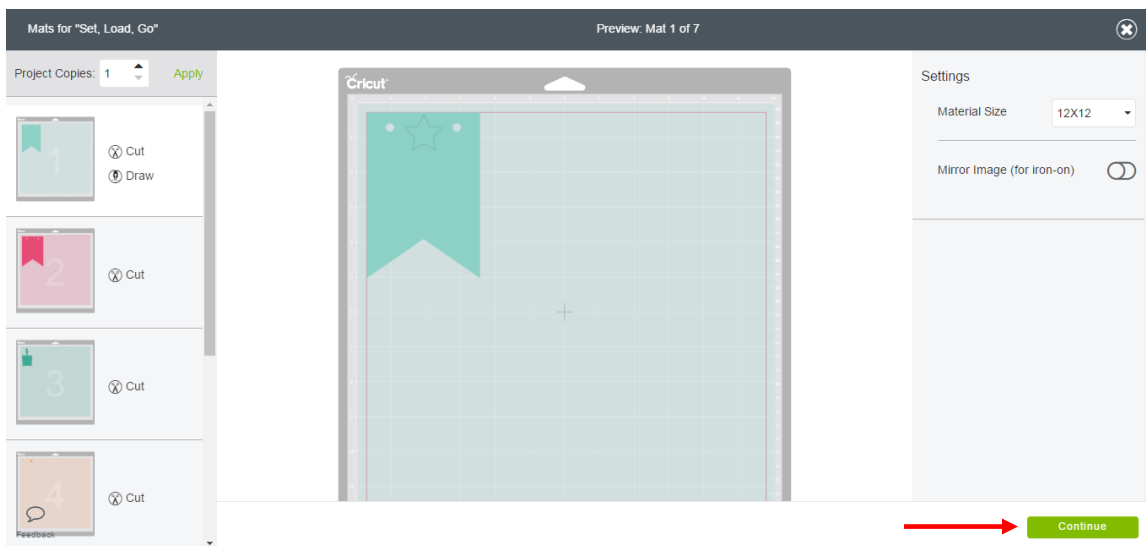
Step 1 Once you've finished designing your project, click *Make It* on the Canvas Header to begin the cutting process.



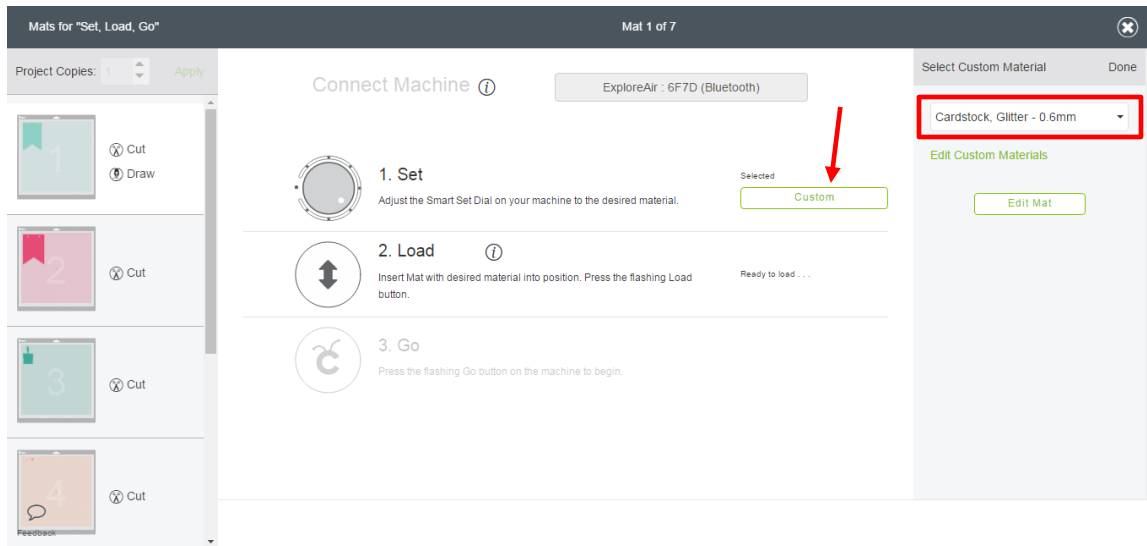
Tip We recommend saving your project before proceeding to the Mat Preview. Click Save on the Canvas Header to save the project in My Projects.



Step 2 On the Mat Preview, review your cutting mats, make any desired changes, and then click *Continue*. If you haven't already done so, you will need to sign in with your Cricut ID and purchase necessary images.

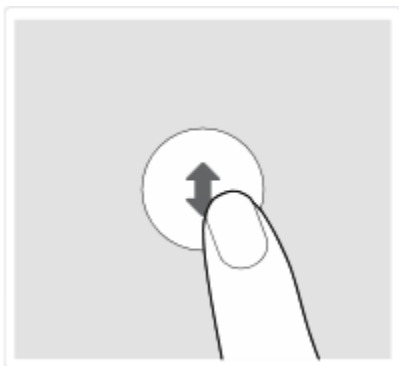


Step 3 Turn the Smart Set dial on your Cricut machine to the desired material. If you select *Custom* on the dial, you then will need to click *Custom* and select the appropriate material from the Details Panel on the Cut Screen.

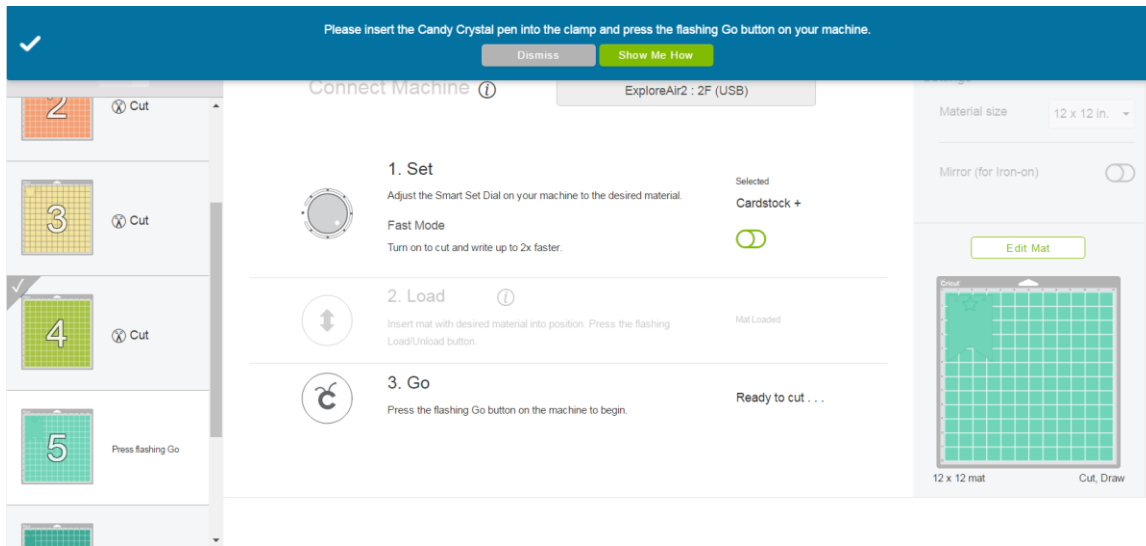


Tip If you are connected via Bluetooth® and USB, you may be prompted to select the proper machine at the top of the screen.

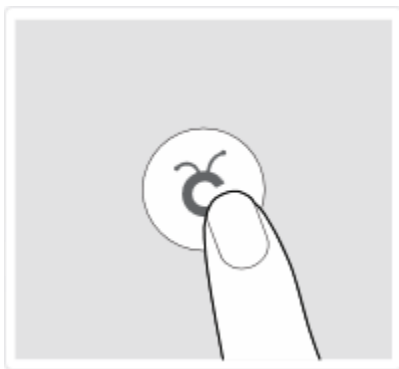
Step 4 Load your cutting mat into your Cricut machine, keeping the mat pushed firmly against the rollers, and then press the flashing Load/Unload button on your machine.



You will receive an onscreen alert if you need to add or change the item in the clamp(s).

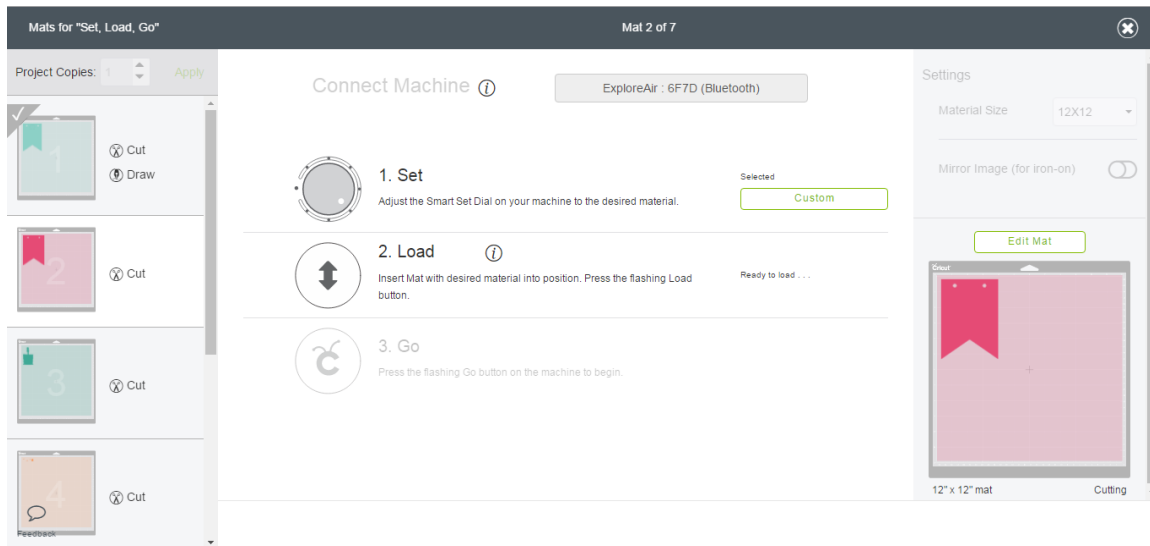


Step 5 Press the flashing Go button on the machine to begin the process.



Tip If the wrong material on the dial was selected, press the Pause button on the machine to stop the cut. Then turn the dial and press Pause again to continue cutting. You then can restart the cut by pressing the Go button before unloading the mat.

Step 6 Press the flashing Load/Unload button on the machine. The mat will unload, and you will automatically move to the next mat.



Tip If the first pass doesn't cut all the way through the material, you can redo the cut. Without unloading the mat, change your dial setting and then press the Go button on the machine. The machine will then redo the cuts in the same locations.