



How Do I

Calibrate the Rotary Blade for Cricut Maker?

To get optimal cut performance, sizing, and alignment, you should perform the Rotary blade calibration every time you change your Rotary blade.

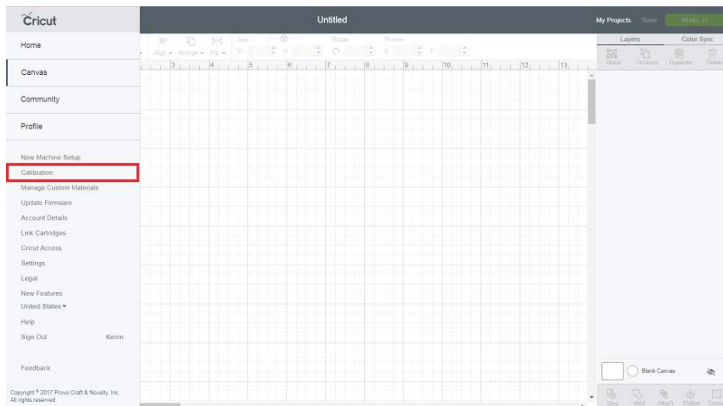


Note: Rotary Blade calibration is for Maker machines only.

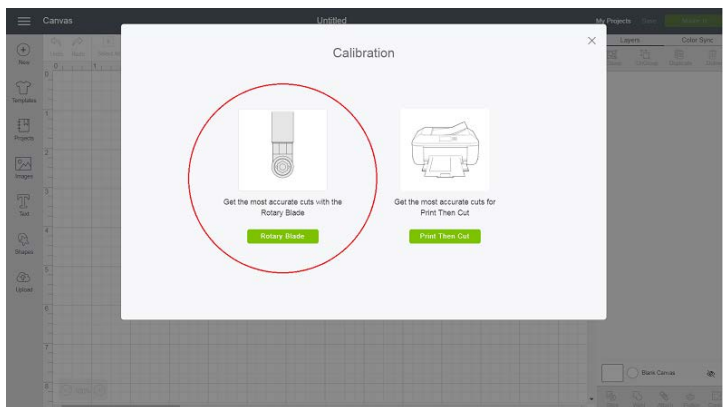


Let's Start

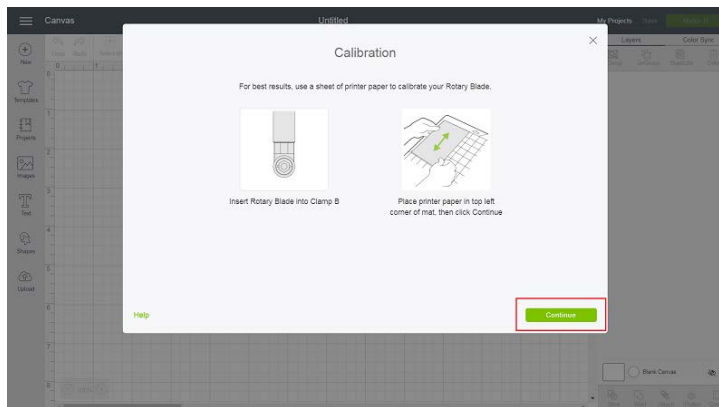
1. Click on the account menu and select **Calibration**.



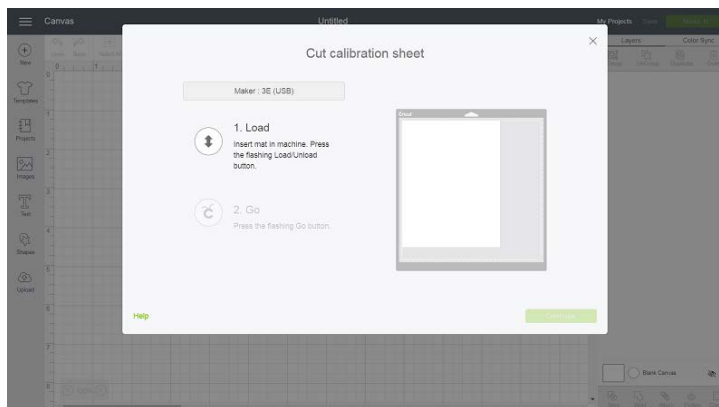
2. Select **Rotary Blade** from the window that appears.



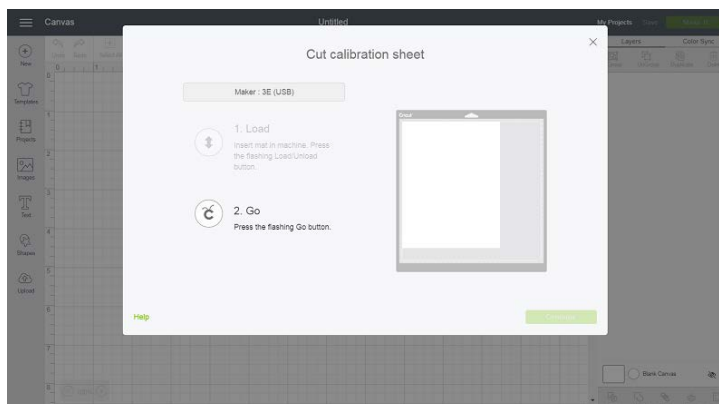
3. Insert the Rotary Blade, and load a sheet of plain printer paper onto your mat. Click **Continue**.



4. Select your machine from the drop-down menu (it may automatically populate in this field; double-check to be sure the correct machine is showing). Load the mat and paper into the machine.



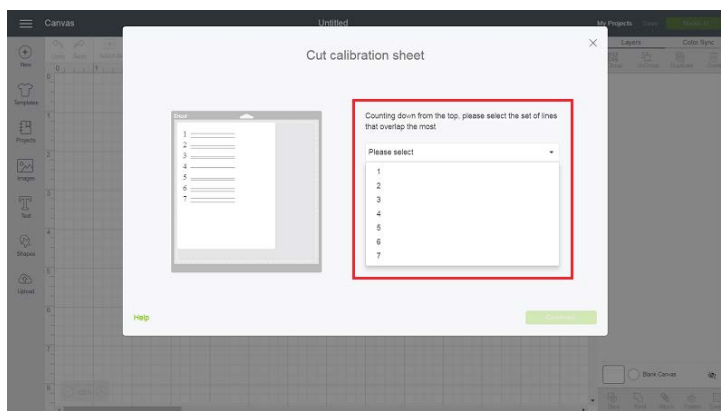
5. Press the flashing “Go” button to begin the calibration.



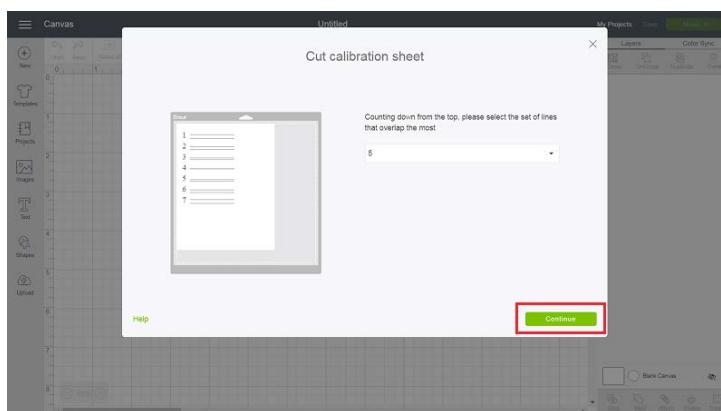
6. The machine will cut 7 sets of lines. When the cuts are complete, you can remove the mat from the machine. Inspect the cut lines to find the set of lines that overlap the most.

Note: If you have difficulty seeing the lines, use a pencil and lightly color perpendicularly across the cuts to reveal the lines.

- Select the corresponding number from the drop-down menu for the set of lines that overlap the most.



7. When you have made your selection, click **Continue**. Your calibration is complete. You may close the window to return to the Canvas screen and continue with your project.



Additional Resources

[Learn.cricut.com](https://learn.cricut.com)

[Help.cricut.com](https://help.cricut.com)

[Inspiration.cricut.com](https://inspiration.cricut.com)