



How Do I

Pair My Cricut Explore or Cricut Maker machine via Bluetooth?

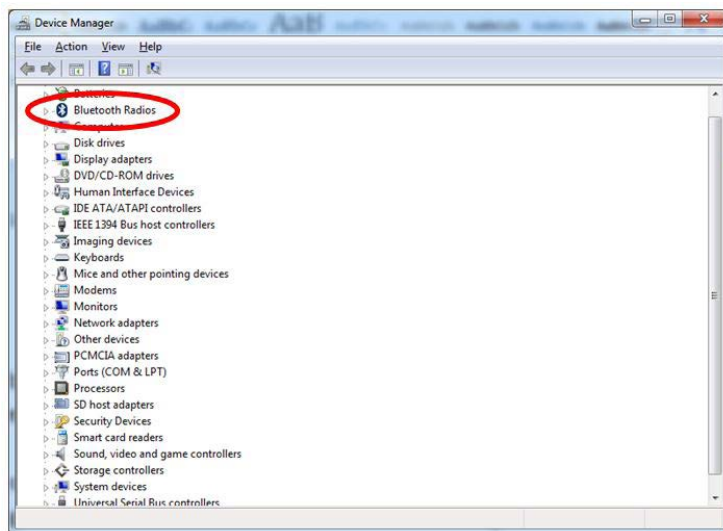
The Explore and Explore One machines require the Wireless Bluetooth Adapter in order to be Bluetooth enabled. The Explore Air, Air 2, and Cricut Maker machines contain a built-in Bluetooth module.

Pairing with a Windows Computer:

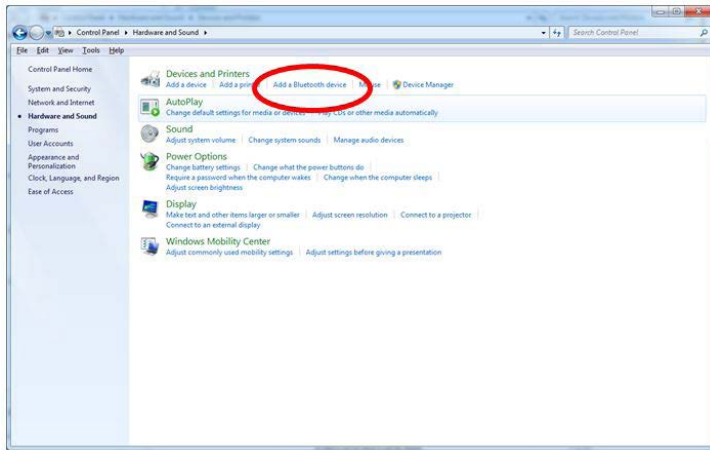


Let's Start

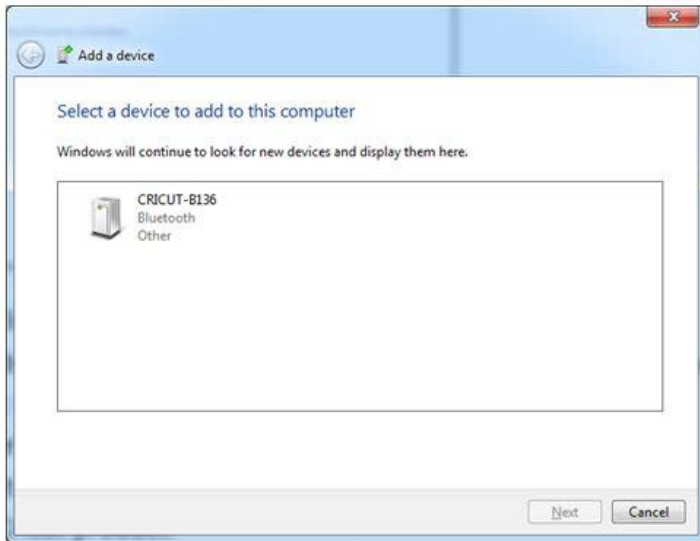
1. Ensure your Cricut Explore or Cricut Maker machine is within 10-15 feet of your computer, and powered on. If you have an Explore or Explore One, ensure that the Wireless Bluetooth Adapter is inserted.
2. Determine whether your PC is Bluetooth enabled by opening the Device Manager and looking for a Bluetooth Radios section. If your computer does not have Bluetooth Radios, it is not bluetooth enabled. You will need to purchase a USB device called a Bluetooth Dongle in order to enable your computer to talk to other Bluetooth devices.



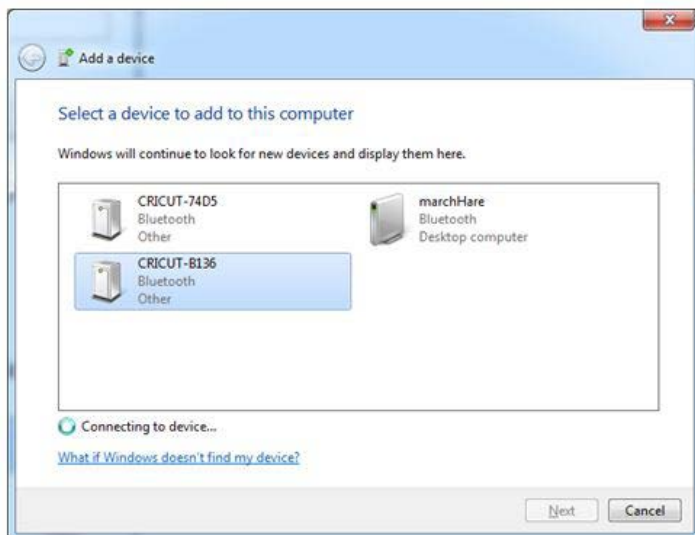
3. Access the Devices and Printer window in the Control Panel. Click "Add a device" (or "Add a Bluetooth device").



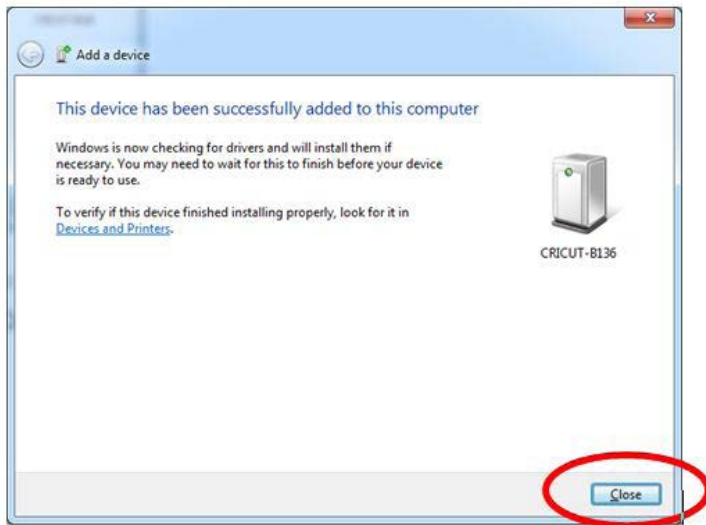
4. Allow the PC to detect your Wireless Bluetooth® Adapter or Explore Air, Explore Air 2, or Cricut Maker Bluetooth module.



5. Select the adapter/Bluetooth module name and double-click it to open pairing options.

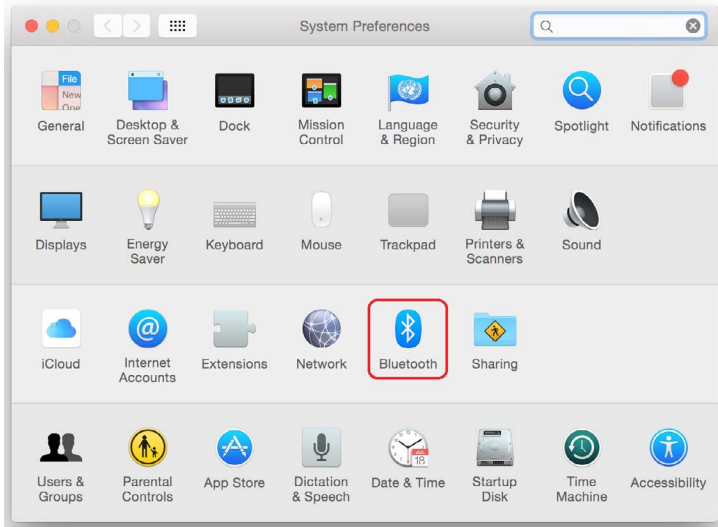


6. Select “Enter the device’s pairing code” and type 0000 into the box. Click “Next”. Pairing is now complete between your PC and Cricut adapter. Click “Close” to close the window.

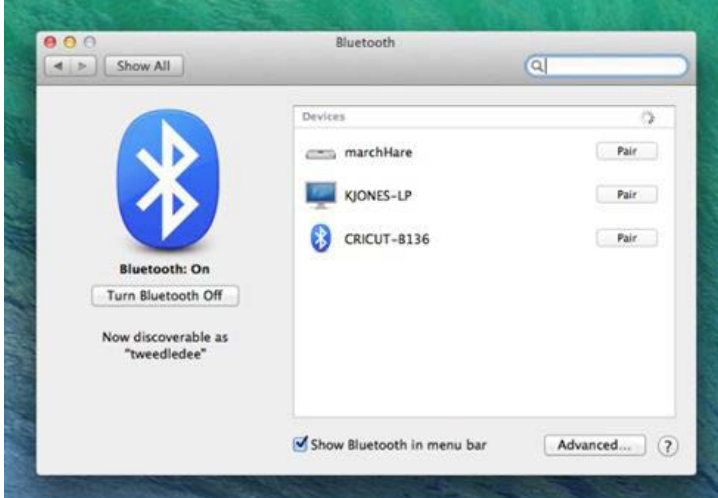


Pairing with a Mac Computer:

1. Ensure your Cricut Explore or Cricut Maker machine is within 10-15 feet of your computer. If you have an Explore or Explore One, ensure that the Wireless Bluetooth Adapter is inserted.
2. Determine if your Mac is Bluetooth® enabled by opening System Preferences and looking for the Bluetooth® option.



3. Open the Bluetooth® window. If Bluetooth service is turned off, click the button to turn it on. Select the Wireless Bluetooth® Adapter or Explore Air, Explore Air 2, or Cricut Maker Bluetooth module from the list of devices. (The name of your Wireless Bluetooth® Adapter is included in your packaging materials.) Click **Pair** to initiate the pairing operation. When prompted, type the Code 0000 and click **Pair**.

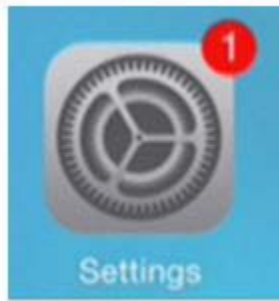


4. Your Wireless Bluetooth® Adapter is now paired with your Mac.

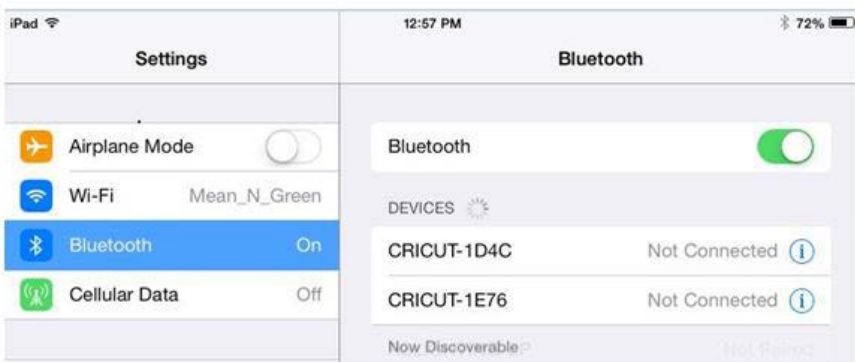
Note: The computer will not always show "Connected" unless the program is communicating with the machine during a cut.

Pairing with an iOS Device:

1. Ensure your Cricut Explore or Cricut Maker machine is within 10-15 feet of your iOS device and powered ON. If you have an Explore or Explore One, ensure that the Wireless Bluetooth Adapter is inserted.
2. Open the Settings app.



3. If your Bluetooth communication is off, tap it to turn it on. You will see the Cricut Explore® Wireless Bluetooth® Adapter or your Explore Air, Explore Air 2, or Cricut Maker Bluetooth module name displayed in the list. (You will find the name of your adapter in your packaging materials.)



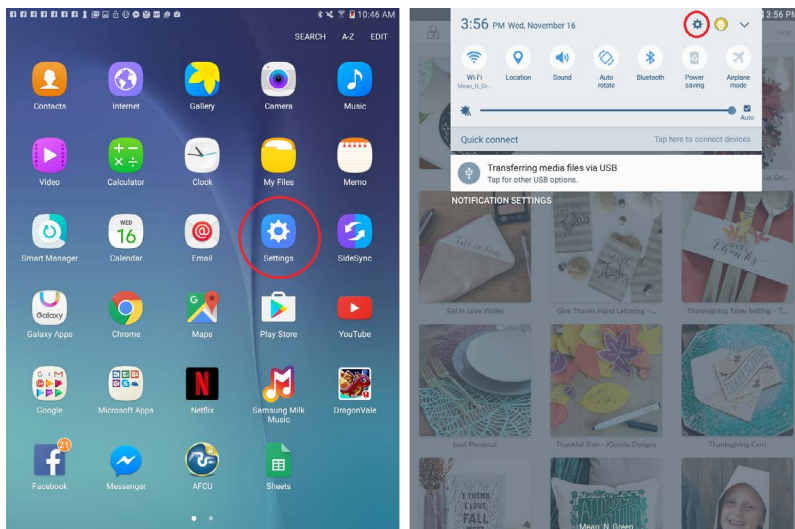
4. Select your adapter/Bluetooth module name from the list to pair with. Your iOS device will initiate the pairing process as indicated by the progress spinner. When prompted, type 0000 for the PIN and then tap **Done**.



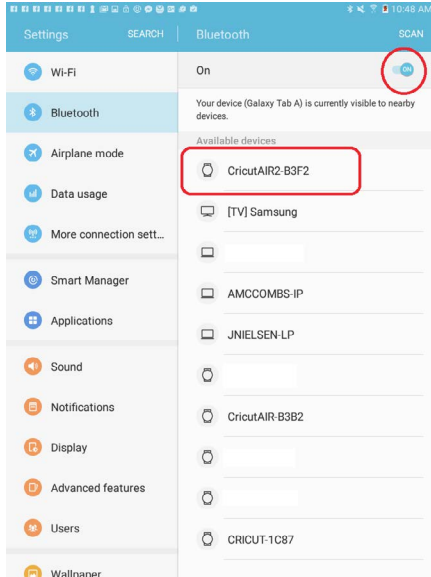
5. A new window will open asking for your permission to allow communication between Cricut Design Space and your device. Select the *allow* option to move forward. You will then be redirected to the Cricut Design Space app. Your Cricut Explore Wireless Bluetooth Adapter, Explore Air, Explore Air 2, or Cricut Maker is now paired with your iOS device.

Pairing with an Android Device

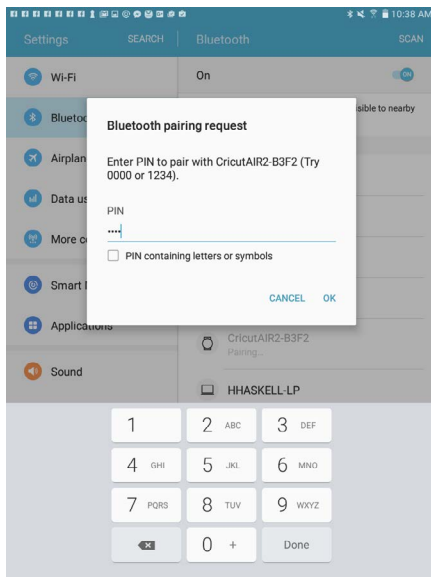
1. Ensure your Cricut Explore or Cricut Maker machine is within 10-15 feet of your iOS device and powered ON. If you have an Explore or Explore One, ensure that the Wireless Bluetooth Adapter is inserted.
2. Open the Settings app, which is accessible from your Apps screen or, possibly, by swiping down from the top of your screen.



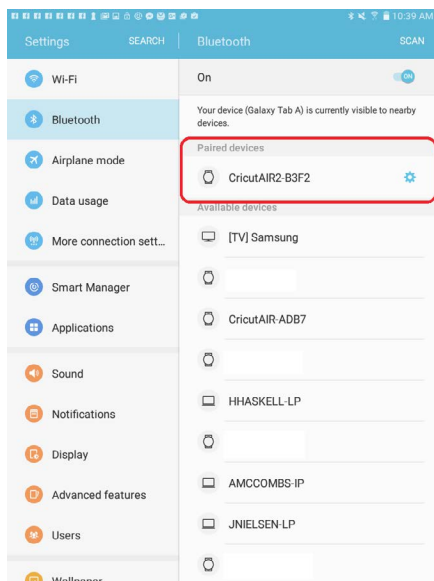
3. Tap **Bluetooth** from the left pane of the window. If your Bluetooth communication is off, tap it to turn it on. You will see the Cricut Explore® Wireless Bluetooth® Adapter or your Explore Air, Explore Air 2, or Cricut Maker Bluetooth module name displayed in the list. (You will find the name of your adapter in your packaging materials. Your Explore Air, Air 2, or Cricut Maker Bluetooth device name can be found on a sticker on the bottom of the machine.



4. Select your adapter/Bluetooth module name from the list. Your Android device will initiate the pairing process. When prompted, type 0000 or 1234 for the PIN and then tap **Done**.



5. When the pairing process is complete, your Cricut device will show under “Paired Devices” and can be used to complete a cut with the Cricut Design Space Android App.



Additional Resources

[Learn.cricut.com](https://learn.cricut.com)

[Help.cricut.com](https://help.cricut.com)

[Inspiration.cricut.com](https://inspiration.cricut.com)