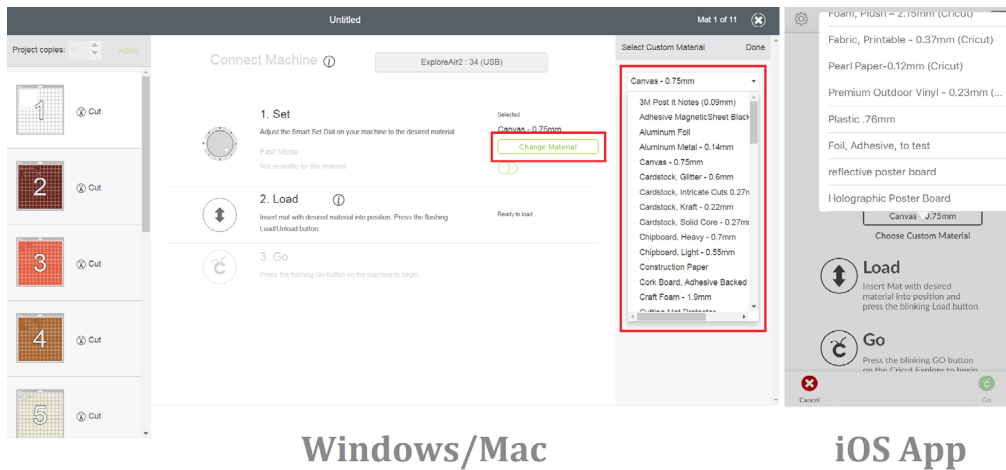




## How Do I

# Use the “Custom” Setting on the Smart Set Dial?

The “Custom” setting on the Smart Set dial allows you to select a pre-programmed custom material, or create your own custom setting. When you are cutting a material which is not listed on the Smart Set Dial, you can set the dial to Custom, and then click **Make It** from Design Space. From the cut preview screen, you can select the material if it is listed in the drop-down menu.



Windows/Mac

iOS App

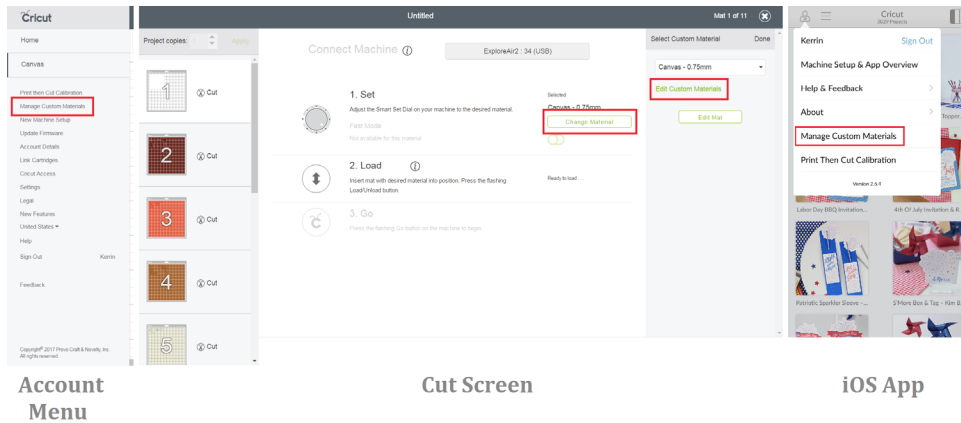
## Adding a new custom material:

You can add a new custom material to your Design Space, either from the Design Space account menu or from the cut screen (the option will appear only if your dial is set to Custom). In the iOS mobile app, the option to add a new material is found only through the account menu.



## Let's Start

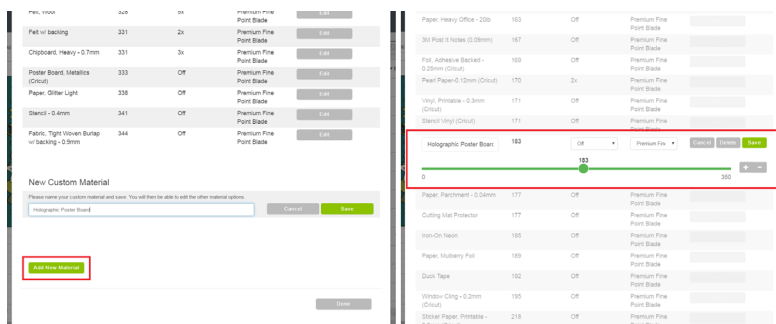
Note: Be sure that your Explore machine is powered on and connected to the computer, or paired with your mobile device. If using the mobile app, you will be asked to select your device before the app will open your Custom Materials screen.



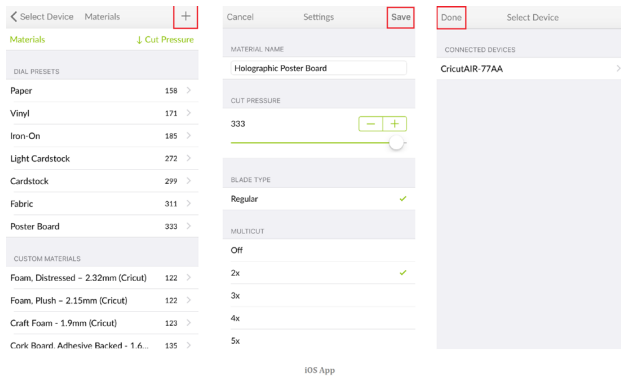
Once you are in the Custom Materials screen, you can add a new material by clicking the Add New Material button (Windows/Mac) or by tapping the + in the upper right corner of the app screen. You can specify the:

1. Name of the material (on Windows/Mac click **Save** after naming the material to access the following options).
2. Cut pressure using the slider or +/- buttons
3. Multicut (this will make the machine to cut multiple times over the same image - used for thick materials)
4. Blade type (Premium Fine Point, or Deep Point so that Design Space can prompt you accordingly.)

Once they are configured, click on **Save** and then **Done** to save your new custom material.



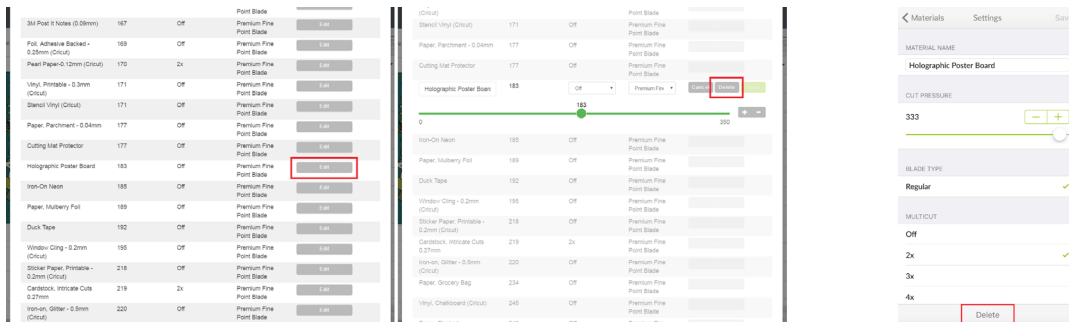
Windows/Mac



## Edit/Delete Custom Materials:

On a Windows or Mac computer you can edit the default custom materials as needed, and remove any custom materials if they are not needed by clicking the **Edit** then the **Delete** icon respectively on the Custom Materials screen.

In the iOS mobile app, tap on Manage Custom Materials through the account menu, then tap on the custom material you wish to edit or delete. Make the needed changes and click **save**, or click **Delete** at the bottom of the screen if you wish to delete the setting.



## Tips

- When creating a new custom material setting, refer to the settings for the material which most closely matches yours to get an idea of the pressure and possible multi-cut needed for a successful cut.
- Thicker materials may not always require more pressure, but may require a multi-cut in order to cut through completely.
- You may have to perform several tests and adjust pressure or multicut settings to achieve the desired result.
- The Explore machines can accept rigid materials up to 1.5 mm thick. Non-rigid materials may be thicker (such as craft foam and leathers) but will be com-

pacted when fed under the roller bars, and will be imprinted by the rubber rings on the roller bars that help to feed the mat through the machine.



Note: While the Explore machines can cut a wide variety of materials, Cricut does not guarantee that they will be able to cut all materials.



## Additional Resources

[Learn.cricut.com](https://learn.cricut.com)

[Help.cricut.com](https://help.cricut.com)

[Inspiration.cricut.com](https://inspiration.cricut.com)

[Material Cut List](#)