

Flattening & unflattening

The Flatten tool allows you to turn any image into a printable image for the Print then Cut feature of Cricut Design Space™. The Flatten tool not only turns your images into printable images, but also flattens them into a single layer. This means they will hold their size and position relative to each other when they are printed and cut.

The Unflatten tool separates flattened layers. It also allows you to separate layers of an enhanced printable image if the image is multi-layered.

Tip: Print layers cannot be printed from the app. While projects with print layers can be designed in the app, you will need to use Design Space® on your PC or Mac® to complete the project.

Tip: Individual layers can be changed into printable images by changing their line type; however, they will each print separately (see “Changing line type” in the “Layers panel” section of the manual for more information). If you want to combine multiple layers into a single printable image, use the Flatten tool.

Flattening images & layers

You can turn any standard image into a printable image by flattening it. You can also select multiple images (both standard and enhanced printable images) and flatten them together.

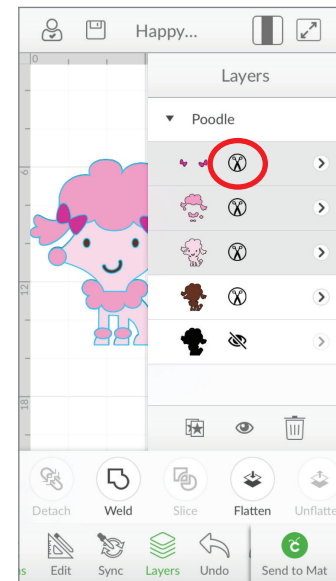
Step 1 Tap the Image button to open the Insert Image panel. Choose any standard image from the Cricut® Image Library and insert it into your project.

Tip: You can also flatten images you have uploaded yourself using Design Space® for PC and Mac®. See the “Using your own images” section of the manual for Cricut Design Space™ for PC and Mac®.

Flattening & unflattening

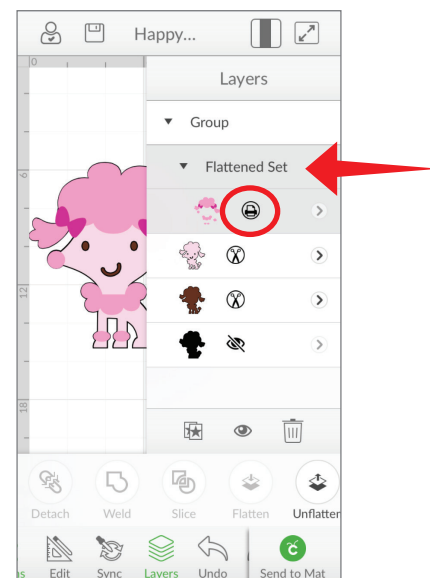
Step 2 Tap the Actions button to open the Actions panel and the Layers button to open the Layers panel.

Step 3 Select one or more layers or layer groups you would like to flatten (see “Selecting” in the “Working with images” section of this manual for tips on selecting layers).



Step 4 Tap the Flatten button in the Actions panel to flatten layers for printing. You will know the layers have been flattened because they appear as a single layer in the Layers panel with the label “Flattened Set.” A printer icon also appears next to the layer thumbnail, indicating the layer will print then cut.

Tip: The line type of the image you wish to flatten must be set to Cut. See “Changing line type” in the “Layers panel” section of the manual for more information.



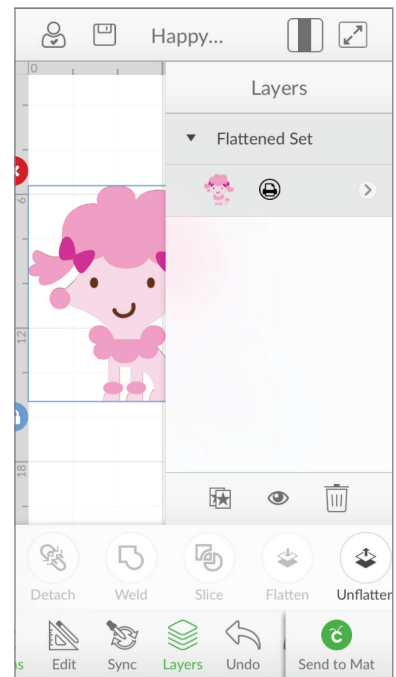
Flattening & unflattening

Unflattening standard images

When you've flattened standard images, you can separate them into individual layers by unflattening them.

Step 1 Tap the Actions button to open the Actions panel and the Layers button to open the Layers panel.

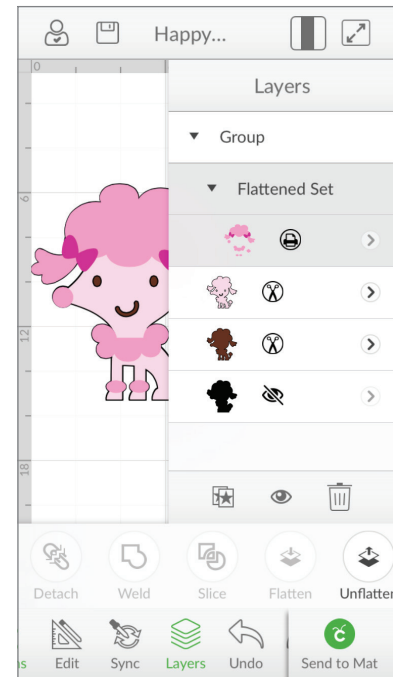
Step 2 Select the flattened image you would like to unflatten.



Flattening & unflattening

Step 3 Tap the Unflatten button in the Layers panel to separate the flattened image into individual layers.

Tip: The line type of unflattened layers will be set to print. See “Changing line type” in the “Layers panel” section of the manual to find out how to change to a cut, draw, or score layer.



Unflattening multi-layer enhanced printable images

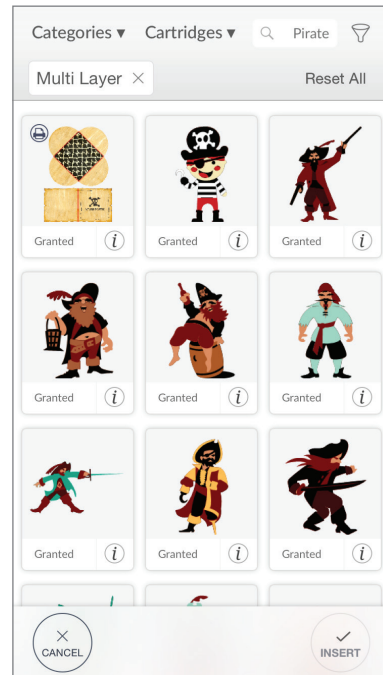
Some of the images in the Cricut® Image Library are enhanced printable images especially prepared for the Print then Cut feature of Cricut Design Space™ for PC and Mac®. These images come onto the design canvas already flattened. An enhanced printable image may have multiple layers that are not visible while the image is in its flattened state. You can separate these multi-layered enhanced printable images into individual layers by unflattening them

Flattening & unflattening

Step 1 Tap the Image button to open the Insert Image panel. Open the Filters menu and select “Multi-Layer”. Choose an enhanced printable image from the Cricut® Image Library (enhanced printable images are indicated by a printer icon in the top left corner of the image tile). Tap insert to add it to your project.



Step 2 Select the image.



Flattening & unflattening

Step 3 Tap the Unflatten button in the Actions panel to separate the flattened image into individual layers as seen in the Layers panel.

Tip: Some of the layers may have an icon in the Layers panel that depicts an eye with a line through it. These layers are hidden. See “Hiding & unhiding” in the “Layers panel” section of the manual for more information.

