

Resizing

There are two ways to change the size of images on the design canvas: by dragging the resize handle or entering new measurements in the Edit panel.

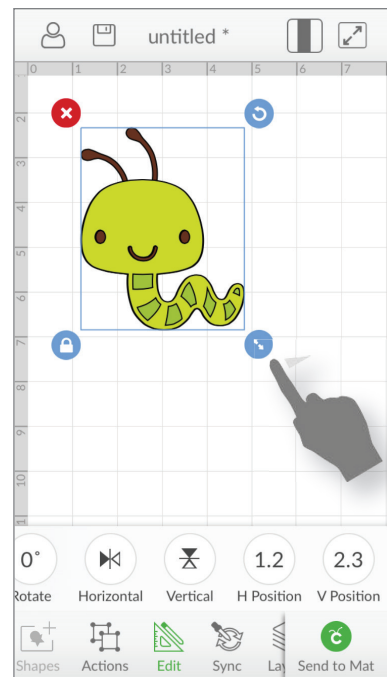
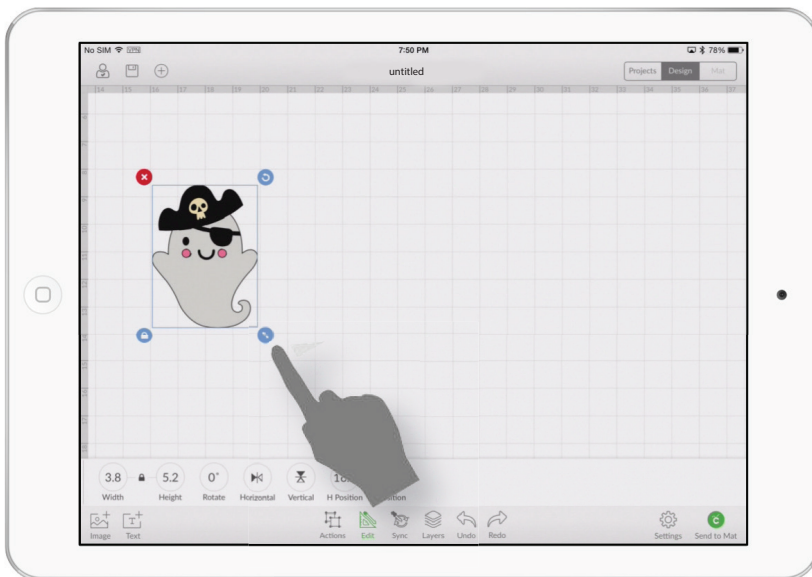
Resizing with the resize handle

Drag the resizing handle with the aspect ratio locked or unlocked. When the aspect ratio is locked (the default state), the width and height change in proportion to each other. When it is unlocked, you can change the width or height independently of each other.

Step 1 Tap on the image to select it. You'll know the image is selected when a bounding box appears around it.

Step 2 Drag the resize handle toward the center of the image to shrink it or away from the center of the image to increase its size. While you are dragging the resize handle, a size indicator appears near the image.

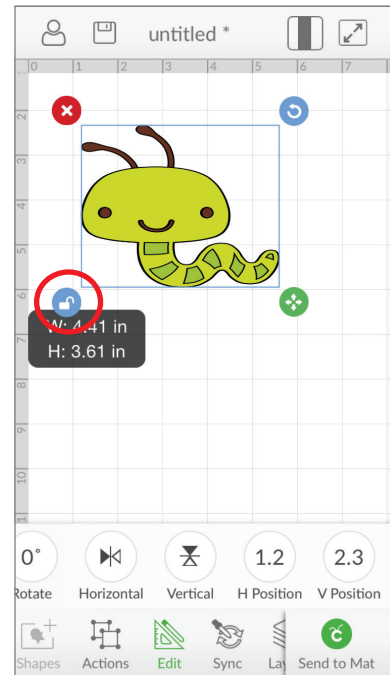
Tip: Image size units are in the same units as the rulers at the edge of the design. The ruler units can be switched between inches and centimeters by tapping the Settings menu and turning Metric Units on or off.



Resizing

Step 3 If you wish to unlock the aspect ratio, tap the aspect ratio lock. Unlocking the aspect ratio allows you to freely resize the image without keeping the width and height in proportion.

Tip: If you do not like the results of your resizing action, the Undo button can safely undo any changes you make.



Resizing

Resizing with the Edit panel

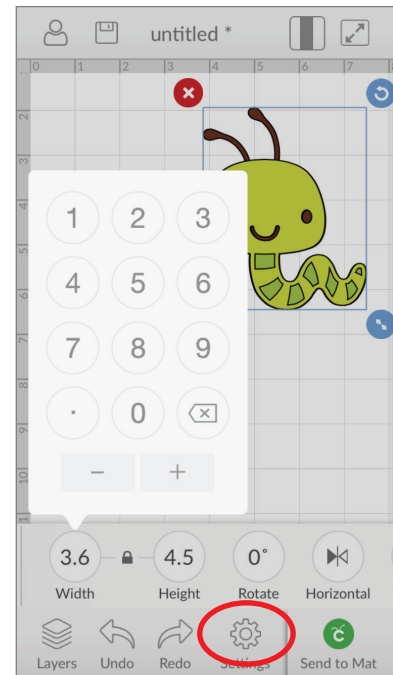
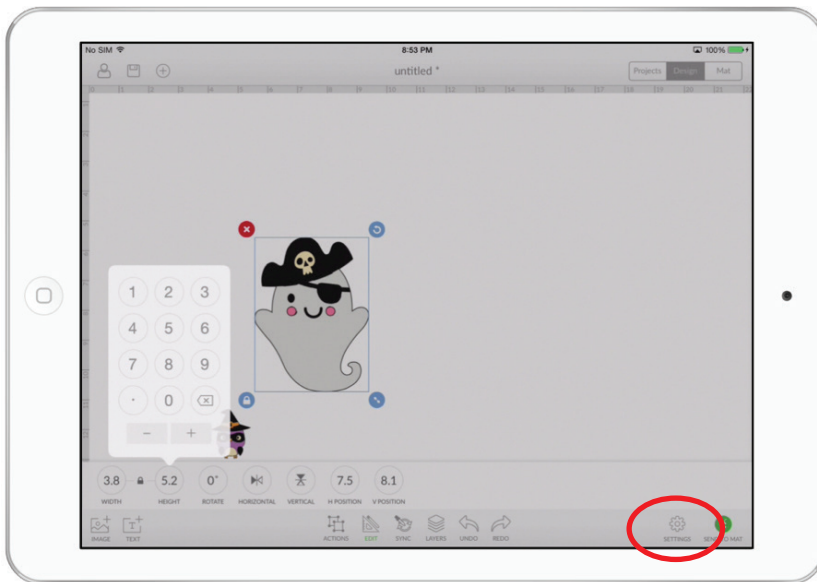
Specify the image size using the Edit panel with the aspect ratio locked or unlocked. When the aspect ratio is locked (the default state), the width and height change in proportion to each other. When it is unlocked, you can change the width or height independently of each other.

Step 1 Tap on the image to select it. You'll know the image is selected when a bounding box appears around it.

Step 2 Tap the Edit button in the bottom menu bar to open the Edit panel.

Step 3 Tap Image Width or Image Height in the Edit panel and either enter a new size using the keypad or tap the (+) or (-) buttons to increase or decrease the size of the image.

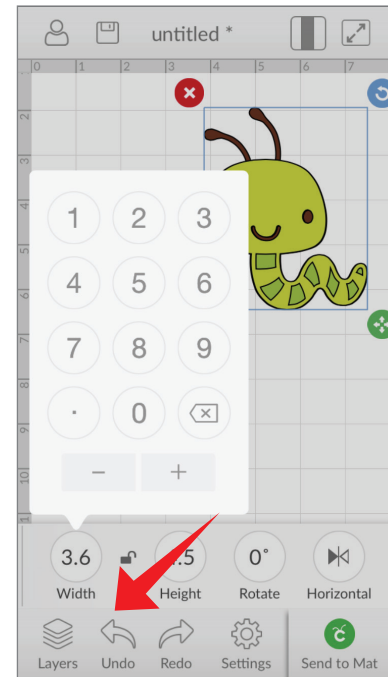
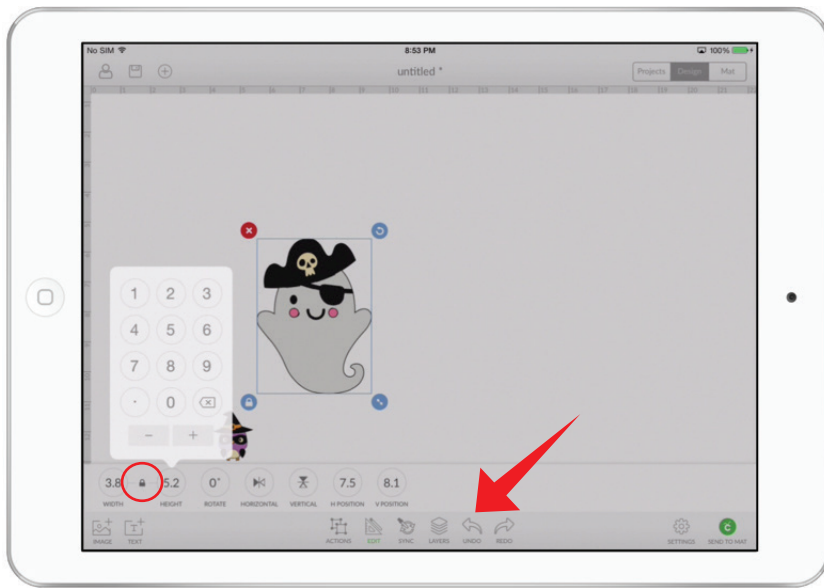
Tip: Image size units are in the same units as the rulers at the edge of the design. The ruler units can be switched between inches and centimeters by tapping the Settings menu and turning Metric Units on or off.



Resizing

Step 4 If you wish to unlock the aspect ratio, tap the aspect ratio lock in the Edit Panel. Unlocking the aspect ratio allows you to freely resize the image without keeping the width and height in proportion.

Tip: If you do not like the results of your resizing action, the Undo button can safely undo any changes you have made.



Tip: Tapping away from the image deselects it. Tapping the image again will reset the aspect ratio to locked.